

SBU Life

Newsmagazine of Southwest Baptist University - Summer 2006



Swaziland



Senegal



Brazil

EXPANDING
THE
KINGDOM

SBU

Editor'snote

Show and Tell

It's one thing to say the right words, it's quite something else to do the right thing. Faithfulness is revealed by what disciples do, not by what they say.

-Dr. Rodney Reeves in *A Genuine Faith: How to Follow Jesus Today*

I've spent the past few days reading Dr. Reeves' latest book and pondering SBU's long-standing commitment to missions and ministry. What a tremendous honor SBU received this spring when we were named *first* in the nation by the North American Mission Board (NAMB) for sending students on mission! What a shock I received when I learned from the NAMB presenter how dark our own continent is in terms of how few people acknowledge Christ as their Lord and Savior! It was sobering to learn that even in a nation we presume to have been founded on Christian values, all around us are people who do not yet have a personal relationship with Christ or a commitment to Biblical principles and expectations. To correct this problem, we can certainly join our students on

mission and "go and tell," but after reading Dr. Reeves' book, I wondered what we can do to better "show and tell" closer to home?

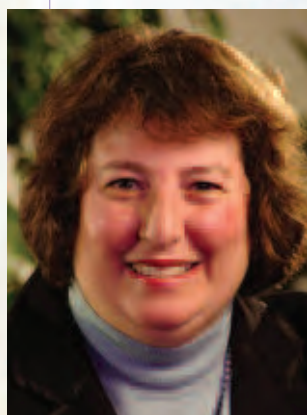
In our interview, Dr. Reeves posed this question: In a geographic area that has already been told the message of the Good News, how can we *show* the Good News? Read more about Dr. Reeves' book and his thoughts on this dilemma on p. 30. Bottom-line: all Christian disciples have a purpose to go on mission and to find a ministry. These assignments may be close to home or far away, but more importantly, they need to be heart-felt and grace-filled moments of connection with others. Remember "show and tell" in elementary school? As a child, I always looked forward to "show and tell" day. I usually brought a book to show the class and I enjoyed showing the pictures while telling them all about the story. My younger kids plan for days what they will take on that special day. I was especially proud of my son the day he took his *Super Heroes* Bible to public school and couldn't wait until class time to show his friends, so he pulled it out of his backpack before school and started sharing what he knew about Jesus. May we all be that excited to share our faith!

Our trustees and donors have shown their commitment to ministry with their support of The Courts Redford School of Theology and Ministry renovation project. Once the final few dollars are raised, The Jim Mellers Center will begin a dramatic conversion from a conference center with dated HVAC into a more efficient classroom space for students and faculty members. Alumni Jack and Edythe Fellows have continued their tradition of supporting missions by presenting Global

Ambassadors Awards to a faculty and student recipient.

In addition to SBU's emphasis on missions and ministry, I am delighted to showcase our commitment to excellence in academics in this issue of *SBU Life*. The interviews featuring some of our scholar-athletes and our new Honors Program students began as feature stories, but when reading the responses of the students to my interview questions, I decided to let them tell their own stories without my interpretation. I trust you will be as impressed as I am with our students' dedication and discipline in their academic, athletic, and extra-curricular endeavors. They make me proud to be a part of SBU!

Since many of our alumni readers have expressed that they do not know our current faculty, this issue begins a feature looking into our faculty's hearts and minds. I hope you will enjoy getting to know Dr. Reeves and Allison Langford as much as I did. ■



Sharina Smith
Senior Director of
Marketing and
Communications
Editor, *SBU Life*

SBU Life

Newsmagazine of
Southwest Baptist University

VOLUME 91 ISSUE 2

USPS 507-500

Sharina Smith
Executive Editor

Dave Danielson
Designer

Adam Ledyard
Sports Information

Address Change

POSTMASTER: Send address changes to
SBU 1600 University Avenue, Bolivar, MO
65613-2597.

How to reach us:

Phone:
(417) 328-1803

Fax:
(417) 328-1808

Internet:
www.SBUuniv.edu

Mail:
1600 University Ave.
Bolivar, MO 65613-2597

Email:
scsmith@SBUuniv.edu

SBU Life (USPS 507-500) is published in March, July, September, and November. It is distributed free to alumni, parents and friends of Southwest Baptist University by the Office of Marketing and Communications, 1600 University Ave., Bolivar, MO 65613. Periodical postage paid at Bolivar, Mo., and additional mailing offices. *SBU Life* highlights the University's mission: to be a Christ-centered, caring academic community preparing students to be servant leaders in a global society. *SBU* does not discriminate on the basis of race, color, creed, national origin, gender, age, marital status or disability.

Any person having inquiries regarding this may contact Ron Maupin, Southwest Baptist University (417)-328-1511.

SBU Life

Summer 2006

Newsmagazine of Southwest Baptist University

C O N T E N T S



3

SIFE Team Wins Regional Competition for 22nd Year

7

Expanding the Kingdom!

SBU Missions ranked first in nation.



13

Balancing Athletics with Academics

Prioritizing is key to students' success

20

Honors Program Scholars Immerse Themselves Into University Life

Regular Features

President's Message2

SBU Update3-7

Calendar7

Sports10-12

Faculty/Staff News25-27

Faculty Profile30

Keeping in Touch32-35



President's Message

The Great Commission is Christ's commandment to us to go into our local communities, our regional area, and our global society in order to spread the Good News of God's love, His forgiveness of sins and the hope for eternal life in His presence. If you have ever heard one of my speeches or presentations, you will know that I often speak of SBU as a Great Commission University. I am convinced that the sun never sets on SBU because of our history of preparing and sending students, faculty, and staff to do missions and ministry.

As we prepare to begin our 128th year of classes, I am pleased to announce that SBU has received another 10-year accreditation by the Higher Learning Commission of the North Central Association. I am even more pleased that the Higher Learning Commission visitors commended our university family for living our mission statement out in daily life. They said SBU "is truly a Christian institution."

Since its founding by Abner Smith Ingman and James Rogers Maupin in 1878, SBU has had an unwavering commitment to Christian higher education with a special emphasis on missions and ministry as well as academics. Without a doubt, I know this is why SBU has kept its doors open despite fire, the Great Depression, and other economic downturns that might have otherwise closed the university. God truly has blessed our commitment to

maintain an academic community that is and, I pray, always will be Christ-centered.

I believe if SBU maintains its focus on nurturing a Christian community and sharing God's love with others, we will continue to weather the storms of life until Christ returns. I will soon celebrate my 10th anniversary at SBU, and it is my desire to continue to lead SBU with a renewed focus for faculty, staff and students so that we may remain a Christ-centered, Great Commission university with a global impact. ■



**C. Pat Taylor
President**

C. Pat Taylor

SBU UPDATE



SBU SIFE Team Wins Regional Competition for 22nd Consecutive Year

The Southwest Baptist University Students in Free Enterprise (SIFE) team returned to Bolivar as regional winners for the 22nd consecutive year after participating in the St. Louis SIFE USA Regional Competition on April 5, 2006. The event was one of 17 SIFE USA Regional Competitions held across the United States in March and April.

J. C. Walker, SBU MBA Director and the Sam Walton Fellow for the SBU SIFE team, said, "This year more than 35 students worked really hard on projects that helped people in the Bolivar community. The team is really about helping others achieve their greatest potential. Winning the competition is great, but our focus is still on our projects."

During this academic year, the SBU SIFE team

organized projects in Bolivar, Halfway and the Springfield communities. Projects included computer training for businesses and community members, a marketing competition for area high school students, financial independence seminars for the community and several other projects.

SIFE is an international non-profit organization present on more than 1800 university campuses in 40-plus countries. SIFE teams create economic opportunities in their communities by organizing outreach projects that teach: market economics, entrepreneurship, personal financial success skills and business ethics. Their projects are judged at competition on creativity, innovation and effectiveness.

SBU Trustees Approve Renovation of Jim Mellers Center

During its spring Board of Trustees meeting May 9, Southwest Baptist University gained approval for a complete renovation of the Jim Mellers Center, which houses The Courts Redford College of Theology and Ministry. "The Jim Mellers Center was built in 1985 as a conference center," said SBU President C. Pat Taylor. "In 1998 The Courts Redford College moved into The Mellers Center when it outgrew its location in Mabee Chapel. The Mellers Center was not originally designed for academic classroom use, and the continued growth of the Redford College programs has made this renovation a necessity."

Taylor said the planned renovation will create new classroom space, replace an outdated HVAC system, and provide for new furniture at an estimated cost of \$1,260,700. To date, 85% of the cost has been raised for the project. The engineers and architects are currently reviewing the programming plans with faculty and staff members who will be using the building. The project is expected to begin late this summer and be completed in one year.

In other Board action, the trustees approved the 2006-07 budget of \$34,671,057, which includes an increase in wages and salaries for faculty and staff.

The trustees also reviewed plans for a campus-wide initiative to further encourage excellence in academics and behavior based on Christian principles and expectations.

The next trustee meeting is scheduled for October 16-17, 2006.

SBU STUDENTS SCORE HIGH IN NATIONAL TESTING

SBU Speech and Debate Wins Awards in National Invitational Tournament

The Southwest Baptist University speech and debate team recently won several awards in the National Invitational Tournament sponsored by Pi Kappa Delta on March 10-12. In overall team awards at the tournament, SBU ranked tenth in the debate sweepstakes totals and third in individual events. Ten students represented the university for three days of competition held at the River Terrace Resort in Gatlinburg, Tenn.

In the final team rankings, SBU finished third, just behind Carson Newman and McKendree universities. The event involved thirty-six participating colleges and universities from across the nation. Other finishers in the top ten schools included Mt. Hood College, Texas at El Paso, William Carey College, Kansas Wesleyan University, Webster University, Bowling Green, and Cameron University.

One of the best achievements for SBU was the finish of the debate team comprised of Jessica Kershner, Nixa, Mo., and Amy Bopp, Fredericktown, Mo. Kershner and Bopp advanced to the octa-finals. In addition, Amy was a semi-finalist in program interpretation and finished second speaker in debate as well as informative speaking. Kershner was awarded the first place speaker award in novice parliamentary debate and earned fifth place honors in both duo interpretation

and program oral interpretation.

Other individual accomplishments for SBU included Rachel Ammerman, Paola, Mo., who received the excellent award in persuasive speaking, and Jordan Compton, Appleton City, Mo., who earned an excellent award in after-dinner speaking and was a quarter-finalist in prose interpretation. Nathan Ross, Riley, Kan., placed eighth in dramatic interpretation and received an excellent award in duo interpretation while Melissa Harlow, St. Louis, Mo., finished seventh in dramatic interpretation and was a semi-finalist in prose interpretation. Other participants for the SBU team were Ben Burns, Springfield, Mo.

Additional significant achievements came from Vandi Eslit, Riley, Kan., who took fifth in duo interpretation and was a quarter-finalist in prose interpretation. Sean McCormack, Overland Park, Kan., was a semi-finalist in impromptu speaking and finished sixth speaker in IPDA debate and David VanBebber, Riley, Kan., was a semi-finalist in program oral interpretation and received an excellent award in duo interpretation. In addition to the awards, Bryan Fisher, a SBU alumnus and graduate student at Missouri State, joined as a tournament judge and guest coach for the weekend of competition.

SBU in 95th Percentile in Business Testing

Southwest Baptist University's College of Business and Computer Science (COBACS) graduates scored in the 95th percentile after taking the ETS Major Field Test for Business. This is the highest test score in the history of COBACS and the highest ranking given by ETS.

Dr. Janet Juhlin, Director of Institutional Research and Assessment at SBU, said the Major Field Test for Business is an assessment designed to measure the basic knowledge and understanding achieved by students in business. This test scores students and their respective business school or program in eight business disciplines including accounting, economics, management, quantitative skills, finance, marketing, legal environment, and international business. The test is administered to over 80,000 business majors each year at over 470 institutions.

Business students at SBU have scored at or above the 90th percentile on the MFT for four graduating classes in a row, and have scored above the 83rd percentile on the MFT with ten of the last thirteen graduating classes.

Dr. David Whitlock, Dean of the College of Business and Computer Science, commented, "Our students continue to excel academically. Our recent ranking as among Business Reform Magazine's Top Ten Christian business schools in the nation in the categories of job placement and best faculty, combined with the prestigious Association of Collegiate Business Schools and Programs accreditation, and our students' continued performance on the Major Field Tests prove that the integration of faith and discipline are complementary goals. These recent scores are remarkable and underline the excellent education SBU students receive. It is also testimony to the superb faculty in the College. They are among the nation's finest educators."

their general education programs to improve the quality of instruction and learning.

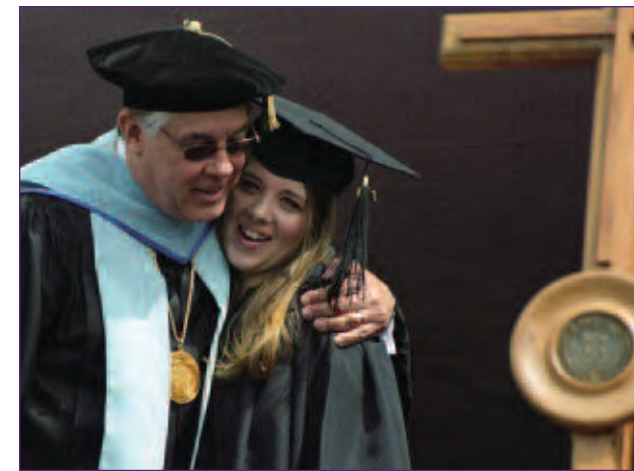
According to Juhlin, all incoming students must take the Academic Profile test at the beginning of their first year at SBU. The students' beginning scores are recorded and then later compared to the test scores achieved as a rising junior. Juhlin said these students' scores had risen from the 55th percentile to the 94th percentile since they arrived at SBU - a testament to an emphasis on academics supported by the SBU Success Center, where all incoming students receive advisement in their first year at the university.

SBU Students Score in 94th Percentile on General Education Test

SBU students who are classified as rising juniors recently scored in the 94th percentile among other universities in the United States taking the Academic Profile test.

Dr. Janet Juhlin, Director of Institutional Research and Assessment at SBU, said the Academic Profile is a test of general academic knowledge and skills. It includes material usually covered in courses taken during the first two years of college, which are often called the "core curriculum" or the "general education requirements." This test is intended for use by colleges and universities in assessing the outcomes of

SBU Names Student "Life Beautiful Award" Recipients



Dr. C. Pat Taylor and Landee Nevills

During commencement on Saturday, May 20, Southwest Baptist University president, Dr. C. Pat Taylor, named two graduating seniors as recipients of the school's 2006 Life Beautiful Award. The Life Beautiful Award was established in 1937 by Rosalee Mills Appleby, a career missionary to Brazil. This award is given annually to an outstanding man and woman in the Southwest Baptist University spring graduating class. These individuals have demonstrated by their scholarship and character that they are living a "life beautiful." The faculty selects the recipients, whose identities remain confidential until commencement.

The female recipient of the Life Beautiful Award for 2006 is Landee Ann Nevills. Nevills is an inter-

cultural studies and sociology major and an honors student. She is the daughter of Monte and Sandy Nevills of Round Rock, Texas. During her time at SBU, Nevills has participated in mission trips to South Africa and Thailand. This past fall semester, she spent a semester abroad studying and doing mission work in Taiwan.

Nevills has been active in a local church in Bolivar, serving at First Baptist Church as the College Ministry Assistant and leading in the Wednesday night

high school youth program. She also has mentored high school girls and led them in Bible study. Nevills has worked as a Disciple Now leader and has led Women of God Purity conference sessions.

Taylor said, "Nevills' compassion for mentoring the hearts of young Christian women in our community is unquenchable. She goes where they go, supporting, teaching, interceding and encouraging. She lives her life to serve God and enable others to see Him through her. She is a reflection of God's love wherever she goes."

The male recipient of the Life Beautiful Award for 2006 is Danny Miller. Miller is a computer science and mathematics major with a 4.0 grade average, who graduated summa cum laude. He is the son of Gary

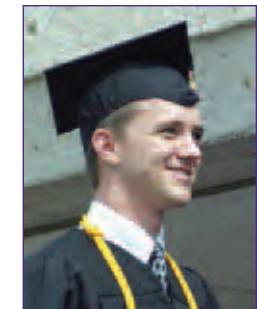
and Carolyn Miller, who are missionaries in Hungary.

Miller is also the recipient of this year's Outstanding Computer Science Graduate award. He is a member of Who's Who Among America's College Students and is a co-recipient of the James Frederick Hurst Memorial Mathematics Award.

Miller is a member of the Association of Computing Machinery and of Phi Beta Lambda. He has worked at the computer lab Help Desk and served as a lab instructor for Introduction to

Computing. In addition, he has worked as the user support technician for the SBU computer services department.

Miller attends Dadeville Baptist Church, where he works with the youth group.



Danny Miller

Following Hurricane Katrina, he volunteered for Convoy of Hope, helping to pack food to ship to New Orleans. He serves as an encourager and tutor to many of his fellow students.

Taylor said, "Miller's parents are missionaries, so he is well-acquainted with mission work. He is a positive individual who clearly draws his strength from his relationship with Christ. He encourages those around him and is a conscientious student who exhibits the highest qualities of a Christ-like character."



SBU Chorale Toured Bavaria, Germany

The Chorale of Southwest Baptist University departed on May 22 for a nine-day performance tour of Bavaria in southern Germany.

The selectively auditioned a cappella choir under the direction of James R. Tarrant, Associate Professor of Music, visited eight cities and performed in venues including the massive gothic Ulm Cathedral. In addition, the Chorale performed at Franiskanerkirche in Rothenburg o. d. Tauber, the St. Ann Kirche in Augsburg, and other churches.

"This has been an undertaking of some 18

months," explained Tarrant. "On the basis of audition recordings we sent earlier, these sites have extended an invitation for us to perform. Were it not for the generous support of the area's choral music patrons, many of our students would have missed this once-in-a-lifetime opportunity."

The chorale has a long history of national and international travel, having completed a performance tour of Italy in 2003. Plans are being finalized to return to Europe in the spring of 2008.

SBU Students Earn Top Awards in PBL State Leadership Conference

Southwest Baptist University students captured 18 top-five finishes during the 47th Annual Missouri Phi Beta Lambda State Leadership Conference recently held in Jefferson City, Mo. on March 24-25. The conference included more than 250 participants representing 23 PBL chapters at post-secondary institutions throughout Missouri including the University of Missouri-Columbia, Truman State University, Evangel University and Drury University.

SBU claimed several first place awards, which were earned by the following students: Michael VanDevender, Nixa, Mo., took home first place honors in both computer concepts and Java programming and Rick Schoenrock, Waynesville, Mo., placed first in information management as well as third in telecommunications. Seth Conyers, Brookfield, Mo., received first place in networking concepts as well as second in C++ programming. Nate Sisk, Sikeston, Mo., was awarded first place for visual basic programming along with second place in Java programming.

Other accomplishments included Peggy Walden, Danville, In., receiving second place for information management and Michael Cobb, Stillwell, Kan., earning second in public speaking. Adam Carney, Weaubleau, Mo., placed second in telecommunications, Megan Burnett, Barnet, Vt., finished second in visual basic programming and Rick Barnhouse, Nixa, Mo., received second in networking concepts. A team comprised of Carney, Barnhouse, and Brian Gray, Bolivar, Mo., respectively earned second in network design.

Additional awards came from Jan Henbest, Cassville, Mo., who took third in business communication and Gray who earned third in C++ programming. Another team comprised of Jason Willey, Raytown, Mo.; Candice Ferrell and Rhiannon Hickman, both of Buffalo, Mo.; received third place honors in emerging business issues. In addition, Ashley McCoskey, Maize, Kan., earned fifth in marketing concepts and Toni Wade, Licking, Mo., was honored as participant of marketing concepts and business communication.

Competitors receiving first or second place in their events are automatically qualified to represent



SBU Articulates Agreement with Cottey College

Southwest Baptist University and Cottey College will be working together in transitioning students. Representatives from both Southwest Baptist University and Cottey College met April 4 at SBU's Taylor National Free Enterprise Center to sign an articulation agreement for a Bachelor of Science degree in accounting between the two schools. Under the terms to the agreement, students completing their Associate's or Associate in Arts degree at Cottey, along with other suggested courses, will be able to transfer those hours to SBU and be on-track for a Bachelor of Science degree in accounting.

Employed by colleges and universities across the nation, articulation agreements are used to assist students in taking the appropriate courses at

two-year colleges that will transfer for credit toward a bachelor's or associate degree at the college or university of their choice.

On hand to sign the April 4 SBU-Cottey agreement from Cottey College was Dr. Mary Kitterman, vice president of academic affairs and Susan Yoss, transfer and career planning coordinator. Signing for SBU was Dr. Gordon Dutile, provost and assistant professor Wayne Clark, CPA and Department of Accounting chair.

Cottey, a two-year independent, liberal arts and sciences college for women in Nevada, is designed as a transfer institution. Approximately 95 percent of the school's graduates transfer to four-year colleges and universities throughout the United States and abroad.

Missouri at the National Leadership Conference on June 24-27 in Nashville, Tenn.

Faculty members Rhonda Agee and Dr. Tim DeClue accompanied the students attending the competition. The conference featured competitive events for individuals and teams, leadership training workshops and the election of state officers for the

coming year. Phi Beta Lambda is an educational association of postsecondary student members preparing for careers in business. There are currently over 11,000 active members in the United States. Missouri has 33 chapters with nearly 700 members, ranking second in membership nationwide.

SBU CIS Students Finish in Top Ten at AITP Nationals

The Southwest Baptist University Computer and Information Sciences Team competed at the Association of Information Technology Professionals (AITP) National Collegiate Conference in Dallas, Texas, on Saturday, April 1. The SBU team finished in the top six in one competition and the top nine in another.

Computer and Information Science majors, senior Danny Miller, Peculiar, Mo., and sophomore Michael VanDevender, Nixa, Mo., teamed up for the two top-ten finishes at the AITP Conference. Miller and VanDevender competed in both Microsoft Visual Studio and Java programming. Each programming event lasted four hours. SBU competed against prestigious universities such as Purdue, Texas Christian, Brigham Young and Illinois State.

Also attending the AITP National Collegiate Conference were seniors Adrienne Johnson, Springfield, Mo.; Joshua McBain, Bolivar, Mo.; Brett Carty, Lee's Summit, Mo.; Seth Conyers, Bolivar, Mo.; Brian Gray, Bolivar, Mo.; and sophomore Justin West, Blue Springs, Mo. In addition, College of Business and Computer Science faculty members Tim DeClue and Rhonda Agee attended the conference as well.

SBU Receives 10-year Re-Accreditation from North Central Association

The Higher Learning Commission (HLC) of the North Central Association of Colleges and Schools visited SBU this past spring to evaluate the university. The HLC recommended and the Institutional Actions Council recently voted to continue the accreditation of SBU for the next 10 years.

Along with re-accreditation, SBU received approval for the post-professional doctoral degree in Physical Therapy. In addition, restrictions have been lifted on SBU's ability to offer any major on the Bolivar campus at Mt. View or Salem. SBU President C. Pat Taylor said that the university also received three commendations from the visiting committee:

"The visiting committee was impressed that SBU students, faculty and administrators live out the SBU mission statement in their daily lives and activities. They further said and I quote, 'SBU is truly a Christian institution.' What a compliment! I am very proud of and pleased with this commendation. The second commendation pointed out that we have an outstanding interactive television program, which connects the main campus in Bolivar with our satellite campuses in Mountain View and Salem. This is a great compliment to Dr. Bob McGlasson and his staff. The third commendation noted SBU's significant improvement in facilities, especially the Jane and Ken Meyer Wellness and Sports Center. They commended us for having excellent facilities for our students and faculty."

Dr. Taylor also acknowledged the faculty and staff who played a part in compiling the self-study used by the HLC in their evaluation process: "The University owes Dr. Rosalyn Snellen a great debt of gratitude as well as all of the Steering Committee members, faculty and staff who were involved in the self-study and subsequent HLC visit."

Fall 2006

August 12, 9:00 a.m.	Welcome Week 2006 begins Student Union
August 14, 8:15 a.m.	Academic Profile Test Pike Auditorium
August 16, 8:00 p.m.	Pizza Bash, Forum
August 17, 8:00 a.m.	Fall Classes begin
August 23, 10:00 a.m.	Formal Convocation Chapel Pike Auditorium
August 25, 5:00 p.m.	ICS Fall Retreat, Jim Mellers Center
August 29, 6:30 p.m.	Church Related Vocations (CRV) meeting Meyer Recital Hall
September 4	Labor Day
September 16, 9:00 a.m.	Praxis Exam Jester Learning and Performance Center
September 16, 10:00 a.m.	GRE Prep Course Gott Education building
September 23, 7:45 a.m.	C-Base Exam, Mabee Chapel
September 26, 6:30 p.m.	CRV meeting, Meyer Recital Hall
October 6-7	Homecoming
October 11-15	Fall Break
October 21, 8:00 a.m.	Fall Visitation Day
October 28	Parents & Family Day
October 31, 6:30 p.m.	CRV meeting, Meyer Recital Hall
November 4, 8:00 a.m.	Fall Visitation Day
November 11, 8:00 a.m.	Fall Visitation Day
November 18-26	Thanksgiving Break
November 18, 7:30 a.m.	Praxis Exam Jester Learning and Performance Center
November 28, 6:30 p.m.	CRV meeting, Meyer Recital Hall
December 2, 7:45	C-BASE Exam, Gott Education Center
December 9, 7:45 a.m.	ACT Exam, Mabee Chapel
December 11	Last Day of Classes
December 12-15	Final Exams
December 15, 7:00 p.m.	Commencement

SBU Closes Year Breaking Fund Raising Record

Fiscal year 2005-2006 was a record fund raising year for Southwest Baptist University. An all time high of nearly \$6,720,352 surpassed the previous record of \$6,627,735 recorded in 2003. Dr. Taylor and the development staff attribute the record year to the timely and faithful payment of pledges made to the Partners In Excellence Campaign, record gifts of more than \$882,000 to the Unrestricted Student Aid Fund, and the generosity of alumni and friends through bequests of nearly \$840,000.

EXPANDING THE KINGDOM!



Swaziland



Senegal



Brazil

SBU Missions Ranked First in Nation

by Sharina Smith

School pride is often in proportion to the number of athletic championship trophies or scholars achieving academic accolades, but in addition to these earthly honors, Southwest Baptist University recently received a prestigious award that has eternal value.

SBU is first among the colleges and universities throughout the nation that the Southern Baptist Convention's North American Mission Board (NAMB) recently honored for the number of student missionaries mobilized during 2005. The NAMB's recognition and presentation was made during the chapel service on Wednesday, May 10, in The Mabee Chapel at SBU. A luncheon followed the service to honor students who served in 2005 and those who are planning to serve in 2006.

Mr. Don King, Student Mission Mobilizer from the North American Mission Board, presented the NAMB award to the SBU Missions team and acknowledged their extraordinary efforts:

"It is for your commitment in reaching North America for Christ that the NAMB recognizes Southwest Baptist University for ranking first in the country in mobilizing student missionaries in 2005. We are thankful for the willingness of individuals like: Kurt Caddy, Dianna Galloway, Kelly Rehm, Nicky Ward, Deanna Collins, and Taby Lane who make this possible. Their work, which is all-too-often behind the scenes, impacts lives on the front-line in the spiritual battle taking place across the country and around the world.

"We are thankful for the willingness of students who, in response to God's calling and gifting, leave their comfort zones and cross cultural, geographic or other barriers to proclaim the Gospel and live out a Christian witness in obedience to the Great Commission.

"Under the auspices and direction of NAMB, 119 colleges and universities mobilized more than 1,700 student missionaries to serve four weeks or more in all 50 states, Canada and Puerto Rico last year. This resulted in 12,651 opportunities to share the Gospel of Jesus Christ. From those, we were able to record 1,567 professions of faith."

During the special chapel service, SBU President C. Pat Taylor shared his thoughts with the students about missions at SBU: "We challenge everyone here to go on a mission project. The world needs what you have to offer. It is an educational opportunity to learn from another culture. I know of no other university that sends out as many mission teams as we do."

Among the awards given, two were specifically given to members of the SBU family. Graduating senior Landee Nevills received the annual Global Ambassador Award for her specific leadership and involvement with missions

at SBU. During her time at SBU, Nevills spent her semester abroad studying in Taiwan and sponsored a mission trip to Thailand. Nevills told the crowd gathered in Mabee Chapel that she was grateful for her award, "it is humbling to get an award just for going out and loving people." Nevills also received the SBU Life Beautiful Award upon her graduation in May.

Kurt Caddy received the Faculty Global Ambassador Award for his hard work, support, and service for missions at SBU. Caddy has served at SBU since 1997. Caddy went to college at Williams Baptist College in Walnut Ridge Ark, and majored in Pastoral ministries with a minor in Psychology and Greek. He received his M.Div. with an emphasis in missions from Southern Seminary in Louisville, Ken. He has worked with the Greene County Baptist Association as a NAMB church planter apprentice and has traveled as a team leader to many countries including, Morocco, Nicaragua, East Asia, Nepal,

Alaska and New Mexico. He and his wife, Laura, will lead a student mission trip to Alaska this summer.

The Global Ambassador Awards are new at SBU. The award is made possible by an endowment given by Dr. Jack and Edythe Fellows, class of 1940. The award is given to those who have made a significant contribution in missions.

After the award presentations, King spoke to the assembly about the attitude and realities of missions in North America: "Three out of four North Americans have no personal relationship with Jesus Christ. The spiri-

tual needs across our nation can seem overwhelming. But we're not evangelizing. We pass people by in the mall or on the street and we assume they will come to us or stumble into church on their own.

"The lost view Christians as hypocritical, judgmental, pious persons. The Christian life is seen as irrelevant and unnecessary. The spiritually dead are watching all of us — not just clergy and missionaries. They are seeing our priorities and they see what we do on Friday and Saturday nights. They see our emails and steamy gossip passed around.

"I'm ready to see revival in North America. Our nation needs a movement of God so big that only God can take the credit. Our Vision at the North American Mission Board is this: Where everyone in North America has the opportunity to respond to the gospel."

After King's presentation, Caddy commissioned student ministry teams, which will be serving this summer in Detroit, Thailand, Turkey, Central Asia, India, and Alaska. SBU students and faculty will lead these teams in expanding the kingdom in North America and around the world. Everywhere they go, the SBU mission teams will tell Jesus' story and hope to change our world. ■



SBU MISSIONS

SBU SPORTS



The Martins have been a part of the SBU baseball program for the past four years and have helped form a strong foundation for the future. These twins were leaders both on and off the field and did whatever Coach Sam Berg asked of them. They are both members of the MIAA Commissioner's Academic Honor Roll.

Baseball

For the second year in a row, the SBU baseball team finished with a 20-win season. The Bearcats finished in seventh place in the MIAA with a 10-18 record and were 21-28 on the year.

Sam Berg accomplished several firsts as the head coach of SBU in his seventh season. SBU was regionally ranked as high as #7 earlier in the year by the NCBWA (National College Baseball Writers Association) and then his team swept Pittsburg State in all four games and defeated #10 Central Missouri State, 3-1.

For the second time in three years, SBU had a pitcher named to the all-MIAA First Team and to the all-Central Region team. Sophomore Zane



Montgomery (Ozark, Mo.) compiled a 12-3 record to gain the honors while breaking the SBU single season record for wins. His 12 wins were also the best in the MIAA. Also garnering all-MIAA

Rex Brown Award

During the spring awards chapel, the SBU athletics department gave out the 2006 Rex Brown Award to women's tennis player Valerie Jones (Wichita, Kan.) and baseball players Chris and Casey Martin (Iberia, Mo.). The Rex Brown award is the top SBU athletic award that can be given to an athlete and is awarded every year to a male and female athlete that does well in academics,

has great character, and is a strong, Christian example.

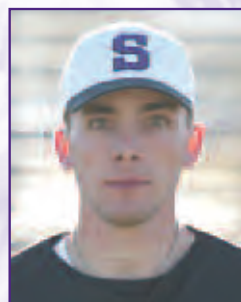
Jones, who was also an all-MIAA selection, has helped to turn around the women's tennis program. In her senior season, the Lady Bearcats had a winning season and were the #2 seed in the MIAA Tournament. Jones went 16-6 overall in singles competition and had a 5-1 record in the MIAA.



Valerie Jones



Chris Martin



Casey Martin

honorable mention were junior Kevin Miller (Springfield, Mo.), sophomore Josh Baggett (Springfield, Mo.), and freshman Jason Asher (Greenwood, Mo.). Asher also was named Co-Freshman of the Year in the MIAA. Baggett led the team with a .347 batting average while Miller had seven home runs and 45 RBI.

SBU will only lose four seniors in Beau Davis (Republic, Mo.), Joel Gould (Littleton, Colo.), and Chris and Casey Martin.

Softball

In her second year as the head coach, Cindy Snead guided SBU to a 17-32 record and a 1-15 record in the MIAA. The Bearcats started the season off 8-4 and were in contention for the MIAA Tournament all the way down to the final game played.

Three players were given all-MIAA honorable mention in senior Cheratin Dunn (Marshfield, Mo.), sophomore Stephanie Martin (St. Charles, Mo.), and junior Mary Nguyen (Republic, Mo.). All three athletes were on the all-MIAA team for a second time in their careers.

Dunn had 13 doubles on the year and finished batting .290 while Martin went 12-14 and recorded 114 strikeouts. Nguyen broke the SBU career stealing record and now has 52 career steals.

Men's Tennis

The 2006 season was a season of learning for the young squad as the Bearcats finished 6-16. SBU went 3-1 in the MIAA and then finished third in the MIAA Tournament. The team was composed of one senior, two sophomores, and three freshmen.

Senior Peter Joos (Budapest, Hungary) was the only player to be named onto the all-MIAA First-Team at #2 singles. He was named to the all-MIAA Second Team at #1 doubles with teammate Daniel Prerad (Perth, Australia). Prerad, a sophomore, received the MIAA Sportsmanship Award and was also all-MIAA Second Team for #1 singles.

Freshmen Emilio El Alabi (Bahia Blanca, Argentina) and Agustin Mollar (Tucamen, Argentina) were both all-MIAA Second Team and honorable mention. Alabi and Mollar were second-team for #3 and #4 singles and then honorable mention at #2 doubles. Sophomore Brian Bajema (St. Louis, Mo.) was all-MIAA honorable mention at #5 singles.

Women's Tennis

Finishing 15-13, the SBU Lady Bearcats had one of their finer seasons in the history of the program. With a 4-2 record in the MIAA, SBU was awarded the #2 seed in the MIAA Tournament where they finished fourth. They also reached as high as #3 in the North Central Regional rankings.

Five players were named all-MIAA with two being on the first-team. Claiming all-MIAA First-Team honors were #2 doubles partners senior Lynne Klaasen (Kuils River, South Africa) and junior Iveta Wolgramm (Tepuce, Czech Republic). They went a perfect 5-0 in the MIAA for doubles play and were 17-9 overall.

Gaining all-MIAA Second Team awards were freshman Trish Moceo (Lubbock, Texas), senior Valerie Jones, and sophomore Lauren Hodson (Bolivar, Mo.). Moceo made the team at #6 singles and then teamed with Hodson at #3 doubles. Jones was on the team at #5 singles.

Golf

Competing strong in every tournament for the 2006 season, the SBU golf team fell short of making the NCAA Tournament for the first time in five years. The young team was just two teams shy of making the tournament.

Even though SBU did not compete as a team at the NCAA Tournament, they sent two individuals in sophomore Clay Brandenburg (Ozark, Mo.) and freshman Tyler Newton (Willow Springs, Mo.). Brandenburg finished tied for 30th while Newton was 40th.

They claimed their best finish of the season in the final meet at the MIAA Tournament in fifth place. The Bearcats shot a 921 (308-150-157-306) to finish just eight strokes behind Missouri Southern. Newton finished in 15th place with a total of 227 (82-38-38-69) and tied a tournament best round of 69 in his final round.

Track

The track program continued to move forward in the 2006 season as they improved in every meet. Running at prestigious meets such as the Kansas Relays and Drake Relays, SBU made their name known.

A highlight to the season came at the Kansas Relays when the SBU women's two-mile relay went

neck-to-neck with NCAA Division I Bowling Green State University for first place. With 100 meters left in the race, BGSU pulled ahead of SBU in front of 20,000 people to take the win with a time of 9:34.28 to SBU's 9:35.36.

In the MIAA Championship Track Meet, eight members picked up all-MIAA honors. On the women's side, Amy Broadhurst (Raymore, Mo.), Lisa



Bunn (Stockton, Mo.), Alyssa Maggart (St. Joseph, Mo.), and Christine Showler (Lebanon, Mo.) all were all-MIAA. Broadhurst earned two all-MIAA awards for fifth in the 1,500 meter run and fourth in the 5,000 meter run. Showler claimed second place in the 10,000 meter run and then Maggart finished fourth and Bunn fifth in the 800 meter run.

Three men were named all-MIAA in Corey McElhaney (Elgin, Okla.), John McCoy (Allteboro, Mass.), and Michael Pierce (Gladstone, Mo.). McElhaney was fifth in the 800 meter run and Pierce took 5th in the 1,500 meter run. McCoy finished in third in the javelin. ■

WOMEN'S SOCCER

8/26	Texas A&M-Commerce	Bolivar, MO	2:00 p.m.
8/30	Missouri-Rolla	Rolla, MO	7:00 p.m.
9/2	Christian Brothers	Bolivar, MO	12:00 p.m.
9/7	Missouri Southern	Joplin, MO	7:00 p.m.
9/9	SW Oklahoma St.	Topeka, KS	3:00 p.m.
9/15	NW Missouri State	Maryville, MO	2:00 p.m.
9/16	Missouri Western	St. Joseph, MO	12:00 p.m.
9/20	Central Missouri State	Warrensburg, MO	7:00 p.m.
9/23	Truman	Kirksville, MO	12:00 p.m.
9/29	Washburn	Bolivar, MO	4:00 p.m.
9/30	Emporia State	Bolivar, MO	12:00 p.m.
10/5	Missouri Southern	Bolivar, MO	4:00 p.m.
10/10	Central Missouri State	Bolivar, MO	2:00 p.m.
10/14	Truman	Bolivar, MO	12:00 p.m.
10/18	Drury	Bolivar, MO	4:00 p.m.
10/20	Missouri Western	Bolivar, MO	3:00 p.m.
10/21	NW Missouri State	Bolivar, MO	12:00 p.m.
10/27	Washburn	Topeka, KS	3:00 p.m.
10/28	Emporia State	Emporia, KS	12:00 p.m.

MEN'S AND WOMEN'S CROSS COUNTRY

9/8	Central Missouri State Mule Run	Warrensburg, MO
9/16	Missouri Southern Stampede	Joplin, MO
9/30	Loyola University Lakefront Invitational	Chicago, IL
10/7	Southern Illinois-Edwardsville Border Wars	Edwardsville, IL
10/21	MIAA Championships	Bolivar, MO
11/4	NCAA Division II South Central Regional	Warrensburg, MO
11/18	NCAA Division II Nationals	Pensacola, FL

FOOTBALL

8/31	Harding	Bolivar, MO, Tailgate Revival Party	6:00 p.m.
9/9	Missouri State	Springfield, MO	6:00 p.m.
9/16	Missouri Southern	Joplin, MO	6:00 p.m.
9/23	Emporia State	Bolivar, MO, Take a Kid to the Game Day	6:00 p.m.
9/30	Washburn	Topeka, KS	1:00 p.m.
10/7	Ft. Hays State	Bolivar, MO, Homecoming	2:00 p.m.
10/14	Central Missouri State	Warrensburg, MO	1:30 p.m.
10/21	Pittsburg State	Pittsburg, KS	2:00 p.m.
10/28	Missouri Western	Bolivar, MO, Family/Parents Day	1:30 p.m.
11/4	Truman	Kirksville, MO	12:00 p.m.
11/11	Northwest Missouri State	Bolivar, MO, Senior Day	1:30 p.m.

WOMEN'S VOLLEYBALL

8/25-8/26	Missouri Southern Tournament	Joplin, MO	TBA
9/1-9/2	Quincy Tournament	Quincy, IL	TBA
9/5	NW Missouri State	Bolivar, MO	7:00 p.m.
9/6	Central Missouri State	Warrensburg, MO	7:00 p.m.
9/8-9/9	University of West Florida Tournament	Pensacola, FL	TBA
9/12	Drury	Bolivar, MO	7:00 p.m.
9/15	Truman	Kirksville, MO	7:00 p.m.
9/16	Missouri Western	St. Joseph, MO	7:00 p.m.
9/19	Missouri Southern	Bolivar, MO	7:00 p.m.
9/22	Fort Hays State	Hays, KS	7:00 p.m.
9/23	Rockhurst	Kansas City, MO	TBA
9/26	Emporia State	Bolivar, MO	7:00 p.m.
9/29	Southern Illinois- Edwardsville	Bolivar, MO	7:00 p.m.
9/30	Pittsburg State	Bolivar, MO	12:00 p.m.
	PSU vs. SIU-Edwardsville	Bolivar, MO	3:00 p.m.
10/6	NW Missouri State	Maryville, MO	7:00 p.m.
10/7	Washburn	Topeka, KS	7:00 p.m.
10/9	Central Missouri State	Bolivar, MO	7:00 p.m.
10/13-10/14	Henderson State Tournament	Arkadelphia, AR	TBA
10/21	Missouri Western	Bolivar, MO	TBA
10/24	Drury	Springfield, MO	7:00 p.m.
10/26	Truman	Bolivar, MO	7:00 p.m.
10/28	Arkansas Tech	Russellville, AR	TBA
10/31-11/4	MIAA Tournament	TBA	TBA

GOLF

9/5-6	Missouri Invitation	Lake of the Ozarks, MO
9/18-19	SBU Invitational	Bolivar, MO
9/25-26	Central Region Fall invitational	Detroit Lakes, MN
10/2-3	Drury Invitational	Springfield, MO
10/9-10	Pittsburg State Invitational	Pittsburg, KS



BALANCING

ATHLETICS
WITH
ACADEMICS
PRIORITIZING
IS KEY TO
STUDENTS'
SUCCESS

God, family, friends, teachers, and coaches all play a part in a student's development of his or her gifts and abilities. The eight scholar-athletes interviewed for this feature have all achieved success in their athletic endeavors for SBU while pursuing excellence in academics. All of the students have named people in their lives who bless them with love, prayers, and encouragement. While these supportive people have provided the students a foundation from which to grow, the students' own self-motivation to determine priorities in their life has been key to their success.



CONTINUED NEXT PAGE ►



Casey Beavers

Smith: How have you balanced your athletic pursuits in women's basketball with your studies?

Beavers: I have always put basketball behind my studies. I always put God, family, school, in front of basketball. I look at basketball as a reward for doing well in school. I think to be a student athlete you need to have your priorities in line before you can be successful.

Smith: How has each part of your life at SBU (academics and athletics) enriched the other?

Beavers: Athletics has made me self-disciplined in the classroom. I know that I am there to get an education first. Academics, on the other hand, have helped me in athletics by helping me maintain my competitiveness on the court. I used to be really competitive with grades, but now I know that I can work hard and do my best in class and be competitive and strive to win in athletics. I think that athletics really helped me to excel in the classroom though, just because I know that I have to get my work done in class to be able to participate in basketball.

Smith: Were you a scholar-athlete in high school?

Beavers: Yes, my high school coach always put a big emphasis on grades before basketball.

Smith: To what and to whom do you contribute your success as a high-achieving scholar and high-achieving athlete?

Beavers: My family has had a lot to do with my success as a scholar athlete. They always pushed me to do my best in everything, but they also knew how important studies were going to be in my life and wanted to see me excel at that. All of my coaches always stressed the importance of grades. Coach Middleton has mandatory study hall for all freshmen and any player with a C in any class. That helped me a lot when I first transferred to SBU.

Smith: What is a typical day for you? How many hours a week do you practice? How many do you study?

Beavers: A typical day for me during basketball season was: wake up and go to classes all morning, eat lunch, go to practice for about two to three hours a day, go home, shower, eat supper, hang out with friends, study, and go to bed.

Smith: Why did you choose SBU?

Beavers: It was recommended to me, and after visiting, I felt that it was the right school for me.

Smith: Has SBU met your expectations?

Beavers: Yes, in every way. I have had a great education, and the education department is wonderful. I learned so much, and I know that I am prepared to teach anywhere. I have also made so many friends at school and in the community. SBU is very caring and my professors really cared about how every student was doing in their class. The education was very Christ-centered, and I know I grew even more in my faith and journey with Christ.

Smith: Would you send a friend to SBU?

Beavers: I would definitely send a friend to SBU. I get asked a lot if I regret going to SBU, and I always answer definitely NOT. It was one of the best decisions I ever made. The education that I received was very Christ-centered and all my teachers cared about my success. The community made me feel like Bolivar was home. I have made so many friends and all my teachers know me by who I am and not by a student number or from a roll call like it is in other schools. SBU is very personal with their students, and I like that!

Smith: When do you expect to graduate?

Beavers: I am excited to be graduating May 20, 2006 with a B.S. in Social Science Education.

Smith: What do you hope to achieve in the 10 years after SBU?

Beavers: I hope to still be teaching and coaching ten years after SBU. I hope that I can encourage student athletes to excel as I was encouraged by my high school teachers and coaches.

Smith: Do you have any additional thoughts to add for our alumni and friends?

Beavers: I appreciate all the support that I received while being a student athlete at SBU. The athletic boosters, fans, and faculty were very supportive.



Andy Joggerst

Smith: How have you balanced your athletic pursuits in track and cross country with your studies?

Joggerst: Good time management. I try to make sure that I get most of my work done before I leave for the meets. If I could not, I made sure I had time to do it afterwards, which was usually on the weekend after getting back from meets—pretty much the same is true for everyday practice. Because I have done this for so long, it has become a

habit to get things done.

Smith: How has each part of your life at SBU (academics and athletics) enriched the other?

Joggerst: Athletics has carried over into my academics because many of the characteristics I gained from sports including: dedication, determination, work ethic, applying for school as well. I want to do my best in whatever I do, which is how I disciplined myself to work for and earn a 4.0 for all four years of college so far. Both sports and academics keep me focused on the other and make me realize that anything worth having is worth working for.

Smith: Were you a scholar-athlete in high school?

Joggerst: Yes. I was MVP [Most Valuable Player] a couple of years for track and cross-country, an all-state honor in track, three sport athlete (cross country, wrestling, track), student of the month, member of student government, member of national honor society, A-honor roll every year of high school, 3.8 GPA

Smith: To what and to whom do you contribute your success as a high-achieving scholar and high-achieving athlete?

Joggerst: My parents, high school coach and college coach (Coach DeLong). They have been there to help me with problems or anything, for that matter, to help me succeed. I just decided that I want to be successful and have worked hard for it. This trait came from these few people that have been a big part of my life.

Smith: What is a typical day for you?

Joggerst: Get up 7:15 a.m. and go eat. Go to class. Go to practice. Eat lunch. Go to class. Free time. Supper. Homework. Bed around 11:00-11:30 p.m.

Smith: How many hours a week do you run?

Joggerst: 12-15

Smith: How many do you study?

Joggerst: Depends if I have tests or not. If I have a lot of tests then I spend a lot more time. If not, like any typical college student, I sometimes have a tendency to put things off, but I still get the work done right and on time. I would guess 6-10 hours.

Smith: Why did you choose SBU?

Joggerst: Running scholarship, my friend, Corey McElhaney, who was my roommate from community college decided to come here as well.

Smith: Has SBU met your expectations?

Joggerst: Yes

Smith: Would you send a friend to SBU?

Joggerst: Yes

Smith: When do you expect to graduate?

Joggerst: Fall 2006

Smith: What do you hope to achieve in the 10 years after SBU?

Joggerst: Start to a successful career, have a house and family

Smith: Do you have any additional thoughts to add for our alumni and friends?

Joggerst: Thank-you for contributing back to the school. It means more to the students then you will ever realize.

Chelsea Kenney

Smith: How have you balanced your athletic pursuits in volleyball with your studies?

Kenney: Through extensive time management skills.

Smith: How has each part of your life at SBU enriched the other?

Kenney: I believe anything you do is worth doing well. Volleyball has taught me a great deal about dedication and sacrifice and I have learned to incorporate those skills in the classroom. Academics have taught me about discipline and that has enriched my volleyball career.

Smith: Were you a scholar-athlete in high school?

Kenney: Yes. I played both volleyball and basketball in high school.

Smith: To what and to whom do you contribute your success as a high-achieving scholar and high-achieving athlete?



Kenney: My parents have always supported and pushed me to do the best that I can in all I do. They taught me the benefits of hard work and how to apply that in every area of my life. My sister, Kalena, has always been there for me. She lets me know when it's okay to be frustrated and when I need to get tough and do better. I contribute any success I have ever had to God (because without Him nothing is possible) and my wonderful family.

Smith: What is a typical day for you? How many hours a week do you practice? How many do you study?

Kenney: A typical day during season is 7:15 a.m. wake up, breakfast, class until 2 p.m. or so. Then practice from 3-5:30 p.m. and weights following. After that the volleyball team goes to dinner in the

cafeteria together, then homework and studying to prepare for the next day. I usually practice 18-20 hours a week and study for about 10 hours.

Smith: Why did you choose SBU?

Kenney: I looked at several different universities before choosing SBU. When I visited SBU I felt like it was the place for me. I really felt led to be here, and as an athlete I felt drawn to the volleyball program. The athletic department here is wonderful and they really care about all of the athletes at SBU.

Smith: Has SBU met your expectations?

Kenney: SBU has more than met my expectations as a university. I have felt challenged in academics as well as on court as a volleyball player. Each semester I am here, I thank God that this was the University I chose to attend.

Smith: Would you send a friend to SBU?

Kenney: I would recommend SBU to anyone, especially a friend.

Smith: When do you expect to graduate?

Kenney: May 2008

Smith: What do you hope to achieve in the 10 years after SBU?

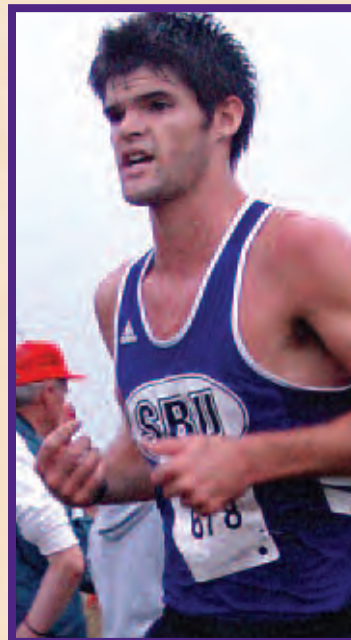
Kenney: I hope to have started a successful career and have a family. (I also hope to travel and see the world!)

Corey McElhaney

Smith: How have you balanced your athletic pursuits in track and cross-country with your studies?

McElhaney: Time management. Track and cross-country take up a lot of time, but that is time that is well spent. I really do not know what I would do if I

CONTINUED NEXT PAGE ►



didn't participate in track and cross-country. Sports have been my life since high school. I ran cross-country in the fall, wrestled in the winter, and played baseball and ran track in the spring. I was also in FFA, FHA, NHA, and FCA. I think being so busy in high school really made it easier for me to cope with the stress of athletics and academics combined in college.

Smith: How has each part of your life at SBU (academics and athletics) enriched the other?

McElhanev: I think athletes (me) benefit tremendously from participating in athletics. It creates a drive and determination that is matched by no other. My determination to do my best and always give 100% has rubbed off on my academics. I only have a

3.8 but I feel like I still give my best. I also think that academics have helped me prioritize my time better. When all my friends are playing games or doing things I have to make sure and get my work done due to sports.

Smith: Were you a scholar-athlete in high school?

McElhanev: In high school I was a three sport All-Stater. I was All-State in cross-country, track, and wrestling. I also maintained a 3.84 GPA. I was also the President of National Honor Society, Reporter in Future Farmers of America, Student representative for Student council, involved in Fellowship of Christian Athletes, showed sheep for FFA, and was voted as Elgin Male Student/Athlete of the year.

Smith: To what and to whom do you contribute your success as a high-achieving scholar and high-achieving athlete?

McElhanev: God is the sole beneficiary of all my accomplishments. The people that have helped me achieve these accomplishments were my family, coaches, and friends. My family has come to support me at every meet in high school and have attended more than half of my meets while in college. This might not sound like much, but I live 6 hours away from home in Elgin, Oklahoma. This weekend at conference I was the proudest athlete at the meet due to my family who sat through rain and cold just to see me run for 1 minute and 55 seconds in the 800 meters. Their love for me has been an inspiration.

I have also had many coaches throughout my career that have made me work harder to strive for my goals. Coach DeLong has been a great impact in my life as a coach, mentor, and friend. He instilled a drive in me to reach my fullest potential/purpose in life not just sports. Another person who inspires me with his hard work and dedication is my roommate/teammate Andy Joggerst. He has been my roommate 3 years in college and runs the 800 with me. He has had a 4.0 GPA his entire life. His dedication is also an inspiration to me. Last, but for sure not least, is my fiancée, Christine Showler. Christine is the hardest working person I have ever known. Whether it is in track and cross-country or schoolwork she will do above and beyond. Needless to say, she keeps me on my feet.

Smith: What is a typical day for you?

McElhanev: A typical (workout) day for me starts at 7:00 a.m. I get ready and go to breakfast about 7:15. I have class at 8:00, 9:00, chapel, 11:00. I then do my workout with my teammate Andy Joggerst at 12:30. This typically takes about 2 hours. We eat a sandwich at the cat snack and then I go to my 3:00 – 4:15 class. This is my schedule every Monday and Wednesday.

Smith: How many hours a week do you run?

McElhanev: During cross-country, the team ran at 5:30 in the morning. I averaged 45-50 miles a week. My longest run was around 15 miles. We ran every day but Sunday. During track we average around 30-40 miles a week. An average workout takes about 2 hours. So multiply that by 6 days so about 12 hours a week. The toughest time constraint is the weekends. We usually leave on Friday and get back late on Saturday.

Smith: How many do you study?

McElhanev: Since I am gone on the weekends, I try to find two days during the week where I can go sit in the library and catch up on all of my studies. I might be there for three hours or sometimes five to six. I try to do this two times a week. That way I am not staying up late every night. I try to get in bed by 11:00 p.m. on other nights. So I probably average two hours a day.

Smith: Why did you choose SBU?

McElhanev: I was not sold on SBU until I came to the campus. The campus was beautiful and the education staff was wonderful. They were very open and went over everything in detail. I was actually debating on coming here or another private school, and I prayed for a couple of weeks and asked God to just show me which one to go. I then found out that I would not be able to come to either due to financial problems so I was devastated. The next day Coach Misch emailed me an offer to come run here at SBU. It was a Godsend to get a scholarship to run. So the reason I came to SBU is because God wanted me here. I have met many great people, got an awesome education, ran under a great coach, and met my wife-to-be. This was where I was supposed to be.

Smith: Has SBU met your expectations?

McElhanev: SBU has gone above and beyond meeting my expectations. The staff here is very professional and encouraging. I really enjoy the activities and support of other students.

Smith: Would you send a friend to SBU?

McElhanev: Yes, I have actually talked to a couple of my high school friends. I hope to be recruiting students to come here. To do that I will have to believe in what I am telling the student athletes.

Smith: When do you expect to graduate?

McElhanev: I will graduate in the fall of 2006.

Smith: What do you hope to achieve in the 10 years after SBU?

McElhanev: I hope to be a successful coach somewhere. I would like to stay on the college scene but if God leads me and my family differently then I will follow. I want to run at least one marathon. I want to have a beautiful family that is devoted to God.

Smith: Do you have any additional thoughts to add for our alumni and friends?

McElhanev: I have had a great two years here at SBU. It has been a great experience. I would like to tell the students to not take what they have here for granted. Don't leave here wishing you had appreciated this college more. I would also say thank you to the Alumni for contributing so much to their alma mater.



Daniel Prerad

Smith: How have you balanced your athletic pursuits in tennis with your studies?

Prerad: Well during the spring season we spend a lot of time on the road traveling which makes it hard to study; however, I do my best by trying to do some studies while we travel; I'll normally bring my books with me and everything that I need to get the homework done.

Smith: How has each part of your life at SBU (academics and athletics) enriched the other?

Prerad: Well I think that over the past year and a half I've learned that those two go hand-in-hand with each other...what you learn on the court translates into the classroom-the teamwork, motivation, and dedication.

Smith: Were you a scholar-athlete in high school?

Prerad: Yes. I used to play high school tennis as well as high school soccer (soccer was more of a social thing)

Smith: To what and to whom do you contribute your success as a high-achieving scholar and high-achieving athlete?

Prerad: I would have to say my parents and coach Bryant. Those two have been very supportive; they were always there to talk to me. They are very loyal as well as encouraging.

Smith: What is a typical day for you? How many hours a week do you practice? How many do you study?

Prerad: Wake up at 7:00 a.m., go to breakfast, go to class, tennis practice from 3:00 to 5:00 p.m., dinner, workout, study. During a regular season I would say that I probably spend around 20 hours a week practicing. I probably spend about 10 hours studying.

Smith: Why did you choose SBU?

Prerad: One of the former guys (from Sydney) that used to play for coach said all the best about the school itself and the teachers at it, and I believed him. Now that I'm here at SBU I would have to agree with him in every aspect because he was right. Also I believe that SBU will prepare me for whatever lies ahead.

Smith: Has SBU met your expectations?

Prerad: Yes...the teachers are very helpful as well as caring. I think it is just a very good school overall.

Smith: Would you send a friend to SBU?

Prerad: Yes. As a matter of fact I've been talking to a friend of mine about coming to SBU as a part of the tennis team.

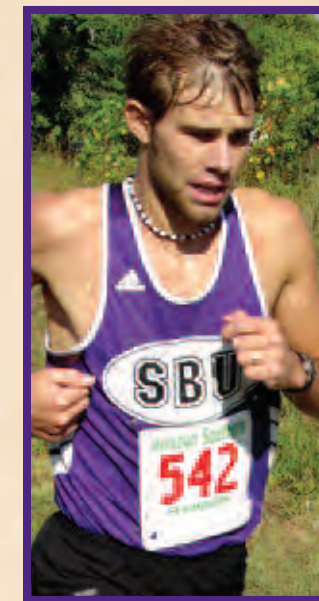
Smith: When do you expect to graduate?

Prerad: I expect to graduate in December of 2008

Smith: What do you hope to achieve in the 10 years after SBU?

Prerad: Get a good job...start a family...and I would like to stay in touch with tennis because I love the game.

T. Jay Sanderson



Smith: How have you balanced your athletic pursuits in track and cross country with your studies?

Sanderson: It's really something that I had to learn to balance in high school. I've always tried to be a well-rounded individual and not put too much emphasis in one area, but enough in all areas to be successful all around.

Smith: How has each part of your life at SBU (academics and athletics) enriched the other?

Sanderson: Well, like I said, I like to try to balance academics and athletics so my time at SBU doesn't become lopsided. Having the opportunity to receive academic and athletic scholarships has given me the best of both worlds. My running gave me a chance to get a good education and my academics gave me a chance to run and compete at the Division-II level.

Smith: Were you a scholar-athlete in high school?

Sanderson: Yes.

Smith: To what and to whom do you contribute your success as a high-achieving scholar and high-achieving athlete?

Sanderson: My parents have always been great Christian role models.

Smith: What is a typical day for you? How many hours a week do you run? How many do you study?

Sanderson: Wake up at 6:45 a.m., run, devotional, classes, if I didn't run in the morning, run in the afternoon, school work or spend time with my wife, work at Master Wang's, school work if need be or time with my wife, go to bed around 11:00 p.m. Running: probably seven to eight hours per week. Studying: depends on the week

Smith: Why did you choose SBU?

Sanderson: My mom and I first noticed it in the Top 100 Christian Universities...researched it...prayed about it, and it's where God led me

Smith: Has SBU met your expectations?

Sanderson: For the most part, yes, but I think as a whole it needs an awakening: a spiritual revival

CONTINUED NEXT PAGE ►



Smith: Would you send a friend to SBU?

Sanderson: Sure, if that's where God was really leading him.

Smith: When do you expect to graduate?

Sanderson: Fall 2006

Smith: What do you hope to achieve in the 10 years after SBU?

Sanderson: That's honestly too far away to know exactly....but all I can hope is that I am following after the Lord and doing his will for my life

Smith: Do you have any additional thoughts to add for our alumni and friends?

Sanderson: May God bless you and keep you close.

Christine Showler

Smith: How have you balanced your athletic pursuits in cross country with your studies?

Showler: Actually, running has helped me to balance my academic studies. Working around daily practices and weekend meets has helped me become disciplined to not procrastinate as much but stay on top of things since I knew that I would not have time to get behind. Also, since travel is part of competing, I along with many of my team mates would take homework with us and work on it during the trip to and from competitions.

Smith: How has each part of your life at SBU (academics and athletics) enriched the other?

Showler: Both have made me more disciplined and have helped me stay organized. Also, many of my teammates are great students and we all try to encourage and help each other to bring out the best on the track and in the classroom. If anyone has a question or is struggling, we try to help/encourage that person the best that we can. The cross country team holds a tradition of academic excellence and we come into the program knowing that we are to keep that standard through our academic performance in the classroom.

Smith: Were you a scholar-athlete in high school?

Showler: Yes, I was salutatorian of my graduating class and captain of the cross country and track team. I also participated in band, colorguard, Latin Club, SADD, Future Teachers, National Honor Society.

Smith: To what and to whom do you contribute your success as a high-achieving scholar and high-achieving athlete?

Showler: To God for giving me the ability to run and compete competitively at the college level and for a drive to be the best that I can in all that I do. I also owe a lot to my parents who would take me to practice at 5:15 in the morning (everyday when I started running as a freshman in high school) before I could drive, and for encouraging me to give best that is in me for whatever I do. They supported everything that I did and encouraged me to put my heart into it all the way.



Smith: What is a typical day for you? How many hours a week do you practice? How many do you study?

Showler: A typical day...mine has changed a bit over the last year and half since I am now a graduate student. When I was an undergraduate I would have class (typically no less than 19 hours a semester because I wanted to graduate early), then go to practice for about 2-3 hours everyday. I would study approx. 2-3 hours a night on a regular basis. Graduate studies are typically done at night, so I work as a graduate assistant in marketing and communications, practice 2-3 hours and then go to class for 3-4 hours at night.

Smith: Why did you choose SBU?

Showler: I toured several other schools and prayed about my decision and felt that this is where God was leading me to go. I really appreciated the Godly atmosphere and the friendly people.

Smith: Has SBU met your expectations?

Showler: Yes, every school has ups and downs, but I feel that I have grown in my spiritual walk, have received a quality education as well, had the opportunity to compete competitively in Division-II athletics, and make friendships/relationships that I know will last forever.

Smith: Would you send a friend to SBU?

Showler: Yes, I think that SBU is an institution of quality standards of excellence with caring and qualified faculty (teachers, coaches, and administrators).

Smith: When do you expect to graduate?

Showler: I graduated in December 2004 with a BS in elementary education and middle school social studies and decided to finish out my cross country and track eligibility so I will graduate in May 2006 with an MS in education.

Smith: What do you hope to achieve in the 10 years after SBU?

Showler: I hope to take what I have learned at SBU and make an impact as a teacher. Outside my degree, I also want to have a family and be a good wife and mom. [editor's note: Showler is engaged to Corey McElhaney, featured above]

Smith: Do you have any additional thoughts to add for our alumni and friends?

Showler: Running has helped me develop character and perseverance, and I have made many friendships that I know will last forever. I will always treasure the good times that I have had in cross country/track practice, competing in meets, and working hard to succeed in the classroom. All of these are great memories that I will cherish and remember as I soon transition from a student-athlete to an SBU alumna.

Nick Smart

Smith: How have you balanced your athletic pursuits in football with your studies?

Smart: I was taught at an early age that my academics came before athletics. I know how much time I have throughout my day that I don't have to be in football, and I have to use that time wisely. A lot of nights there isn't time to hang out with friends or do some of the fun things. Don't get me wrong, I still have fun, but when there's work to be done, it always comes first.

Smith: Were you a scholar-athlete in high school?

Smart: Yes, I was salutatorian at Marionville High School in 2004. My grades were extremely important to me in high school. My parents made sure I had my priorities right as far as school work went. It was also my senior year of football that I quarterbacked my high school team to win the state championship and lost the state championship game in basketball. I was later named the *Springfield News-Leader* athlete of the year for my success in all sports and in the classroom.



Smith: To what and to whom do you contribute your success as a high-achieving scholar and high-achieving athlete?

Smart: As far as a scholar goes, I have to attribute it solely to my parents Randy and Gayle Smart. They instilled in me at a very young age that I was to make good grades in class. They never really had to

stay on me much about my grades because I caught on to it pretty quick. I quickly became a person that had to make good grades. I put the pressure on myself to perform all the way through high school and still today. I have an older sister who is extremely intelligent so she really set the bar high and I thank her for pushing me. Me being the competitive brother that I am, I was always trying to out due her in the classroom but that rarely if ever happened.She was valedictorian - ha, ha.

I believe my drive and dedication to the classroom really continued over on to the playing field. My dad would play ball with me every night and my parents would drive me to every practice when I was young. They have never missed one of my games. As far as a role model growing up, it would have to be my two older cousins who went to Marionville High School as well. They set the stage for me. I watched them excel in athletics as well as in the classroom. I never knew Marionville athletics could be bad because they were part of a dominant era in Marionville Athletics.

Smith: What is a typical day for you? How many hours a week do you practice? How many do you study?

Smart: Typical days during season start like this: I go to class and then starting at 2:15 p.m. we have meetings until 3:00. We start practice and then finish up

around 6:00 or 6:15 just before the cafe closes. I usually grab a bite to eat after practice (not usually at the cafeteria.) From about 7:00 p.m. on I will get the studying done that I need and go to bed so I can start the day over.

During off season I workout at 6:00 in the morning and then go through my school day. Off season gives me much more time to concentrate on academics, which I need because I carry a full load. Each week, we practice somewhere between 20-25 hours. That doesn't include our game day which is Saturday. Home games usually start around 9:00 a.m. and we will get done about 4:30 p.m. So there is another seven to eight hours.

Studying is something that comes rather easy for me. I probably study an average of two hours per test - sometimes a lot more and sometimes a lot less. It just depends on the total hours, I would say somewhere between 7-10 hours of actual coursework away from class.

Smith: Why did you choose SBU?

Smart: I really think God led me to SBU. I am from around here so I knew about SBU and what it was about. I didn't want to come here because of the poor tradition in football. Once I started looking at other schools recruiting me, SBU really became my best option. I liked the coaches and I have been a Baptist all my life, so it seemed as if God really put it right in front of me.

Smith: Has SBU met your expectations?

Smart: SBU has met my expectations. It took a little adjustment but I've really had some solid friends that made my transition to college very simple. SBU has given me what I wanted - a chance to continue my athletics as well as pursue my academic goals.

Smith: Would you send a friend to SBU?

Smart: Yes I would. I actually have a teammate coming here to play next year that I went to high school with. I was a big part of encouraging him to come. I believe the football program is very close to competing at the highest level. I also believe the campus is growing and has had some very nice additions.

Smith: When do you expect to graduate?

Smart: I expect to graduate in December of 2007. I am graduating in three and a half years. My full load of classes enabled me to graduate a semester early.

Smith: What do you hope to achieve in the 10 years after SBU?

Smart: I really hope to become a successful businessman. My Dad has been very successful in his career and I hope to follow in his footsteps. Smart Insurance Agency has been in my family for over 45 years and I anticipate working under my Dad and helping the agency to branch out and become even more successful. It is an exciting opportunity and I look forward to owning a business and having the challenges of reaching goals for the company.

Smith: Do you have any additional thoughts to add for our alumni and friends?

Smart: I would really like to thank my grandparents and parents for supporting me through my entire life. I couldn't have been blessed with better people to model my life after. They have encouraged me throughout life's endeavors and taught me many valuable life lessons and taught me about God. ■



Honors Program Scholars

Immerse Themselves Into University Life

“With the support of their peers and the University, our new Honors Program students have immersed themselves in the University,” said Allison Langford, SBU Honors Program Director and Instructor in the University Success Center. “They are friends with each other, but I also see them out and about at sporting events, at the alumni trivia extravaganza, at discipleship — they are really immersing themselves in life here.”

A former math teacher, Langford was an honors program student during her college years at Texas A&M, and her positive experiences have given her a desire to make students feel welcome at SBU: “The honors program students have welcome week dinner at my house. We also have a dessert party with parents during open house at my house. My first-year experience in college was good. I left teaching math, which I loved, to come to the Success Center to re-live that freshman year. I am so happy to be involved in our Honor’s Program and in the first-year experience with other students.

“I lived in an honors dorm at Texas A&M. I loved that experience. I was amazed at the fact I was one of many [honor students]. We shared more. We looked for people of different strengths to study with - instead of being down on ourselves for our weaknesses. I enjoyed high school, but I enjoyed walking into an environment where studying and learning were a priority. When you wanted to study, your peers understood not wanting to go to a movie instead. Here the honor students have even more in common as Christians and yet each one is so different. It’s so exciting!”

Langford said the first year of the Honors Program has been a success academically as well as in its goal of creating a peer group for scholars within the community. “This past spring we offered *Honors Intro to the Fine Arts* as a required course and *Honors Fundamentals of Speech* as an

elective. We’ve had a very positive response from the faculty. Dr. Renee Waters and Dr. Joshua Compton both said the honors program students were well-prepared for class and had studied.”

Nineteen students currently completed their first year in the Honors Program having met the following rigorous criteria:

- ACT score of 28 or higher; SAT score of 1240 or higher
- High school GPA of 3.5 or higher; transfer GPA of 3.5 or higher
- Completed and submitted the Honors Program Application
- Completed an on-campus interview and the writing component for the Honors Program.

“The SBU Honors Program is competitive and selective,” said Langford. “We have a limit of 30 students per year. They complete an application and then are selected for an interview with the faculty honors committee. Finally, they have 50 minutes to complete an essay while on campus.”

Langford explained that the SBU program is unique in its emphasis on servant leadership, spiritual growth, and intercultural relationships in addition to academics. “Many colleges have collegiate honors programs, but some universities just have a coursework program and not the inter-relational features of our program at SBU.

“Our program may be less academic than others, but the other three components are in line with our mission statement, and they make our program unique. Our program shows SBU’s support of scholarliness,” Langford said. “I want SBU to be known as a scholarly school. Ideally, we want to send out missionaries and create good citizens. In less than three years, we will probably graduate our first honors program students. The honors students love it here. They are fantastic individuals. They are just going to impact our communities and Christ’s Kingdom. We will see it in 15, 20, or 30 years to come.” ■



Lydia Powers

Smith: How have you balanced your Guatemala missions work with your studies?

Powers: At this time in my life, I am called to be a full-time student preparing for the mission field. Realizing this has helped me balance work in Guatemala with my studies here at SBU. For instance, a few months ago a missionary couple asked me to take next year off of school to live with them in the Guatemalan highlands and work as an intern. Knowing that God’s plan for me now is to be at SBU, I had to turn down the offer, hard as it was.

Being in school full-time does not mean that I can never work in Guatemala. In fact, this past April I flew down for four days to attend an indigenous *Cakechiquel* wedding, where I spent the weekend carrying firewood, learning to make *chuchitos* (breakfast tamales) with my “adopted Guatemalan family”, and helping my friend prepare for her traditional wedding. I also have tentative plans to study at a language school in Antigua, Guatemala for the summer of 2007 in order to complete my minor in Spanish. I hope to live in a Mayan town and translate on medical teams. Even though college is my primary focus now, God is showing me how to balance both my studies here and my work in Guatemala since they are both an important part of my life.

Smith: How has each part of your life at SBU (academics and missions) enriched the other?

Powers: I have seen academics and missions enrich each other in ways that I never thought possible. I am an Intercultural Studies major and it is very rewarding to study something so close to my heart. My *World Christian Foundations* class with Dr. Frost has changed my outlook on missions, it has confirmed my dreams to serve as a cross-cultural missionary, and it has convicted me in many ways. The

Honors Program Scholars

Reveal Their Heart for Missions, Ministry and Medicine

Global Health class offered earlier this semester reaffirmed my desire to study nursing by helping me to realize the vast medical needs around the world. I love the fact that my studies are vital to my preparation for cross-cultural missions.

Smith: Were you involved in missions in high school?

Powers: I began going on annual short-term mission trips to Guatemala when I was 13, and I continued these throughout high school. My mom helped coordinate these trips, so I was active in planning them as well. We traveled to the highlands of Guatemala each summer and built roads, dug latrines, and facilitated vacation Bible schools. One year we hiked four hours (one way) into a village where we were the first group of white people to arrive in the village’s 108-year history. We were shocked when through the *Pokomchi* translator we learned it was so remote that they were actually afraid we were going to eat them. The local pastor quickly dispelled this myth assuring them that we were not going to eat them.

During my junior and senior year of high school, I volunteered to teach English as a Second Language at Third Baptist Church in St. Louis to immigrants and refugees. Teaching provided the opportunity to establish friendships with people from Iraq, Iran, Mexico, Peru, Romania, and many other countries.

The last semester of my senior year of high school I spent just over two months in rural Guatemala. These two months stretched me tremendously. I volunteered with HELPS International, an organization that takes medical and construction teams from the U.S. into rural areas in Guatemala. I translated in clinics, triage, pre-op, and even assisted in a gall bladder surgery. When I was not traveling with HELPS, I lived in a *Cakechiquel* town with a local family and studied Spanish and Mayan weaving.

Smith: To what and to whom do you contribute your success as a high-achieving scholar and your interest in missions?

Powers: God instilled in me a heart for missions and a love for learning. I always enjoyed the challenge of school, and knew that it was God’s will for me to study hard and to pursue missions. Also, my mom would be the person that I have to

CONTINUED NEXT PAGE ▶



thank for contributing to my success in school and also my interest in missions. Her heart for people of other cultures always inspired me. We went on mission trips together, taught ESL together, and she taught me the importance of praying for the nations. My mom homeschooled me through middle school and high school, which provided countless opportunities for me academically. She ultimately was the one who most encouraged me both in my dreams and in my studies.

Smith: What is a typical day for you? How many hours a week do you spend on missions? How many do you study?

Powers: Well, I usually stay in bed till the last possible second, and then run to class between 8 and 9:30. After my classes end for the day, I usually work in the University Success Center till dinner. Early evening I have some down time before I start my homework. In the evenings I'll either go to a church event, play soccer in the gym with friends, or continue studying. I am often doing homework till 2 or 3 in the morning. I must say that I am looking forward to getting more sleep this summer.

Each week I spend a good 8-15 hours studying outside of class and about 15 or more hours in class. My involvement in missions right now consists of *World Christian Foundations* (a class that examines mission movements and tactics), *Global Health* (an intensive class on the state of health around the world), and volunteer work around Bolivar. This semester I have volunteered at Alpha House, at Alliance Christian Fellowship, and most recently, at Citizens Memorial Hospital as a Spanish translator. It is difficult to determine the amount of hours per week invested in missions since it varies greatly. It would probably average out to be around nine hours per week.

Smith: Why did you choose SBU?

Powers: The Intercultural Studies Program here is outstanding. I essentially spent four years of high school investigating missions programs around the Midwest and none compared to the ICS program at SBU. I was especially attracted to the program because it requires students to spend a semester abroad where they basically live as cross-cultural missionaries for a period of six months. I also chose to come here because of the strong Christian character of the University. Just by visiting the campus, I could tell that there was a vibrant Christian influence on campus both in the faculty and in the students.

Smith: Has SBU met your expectations?

Powers: After spending four years praying and searching for the right school, I could not be happier anywhere else but here. SBU has exceeded my expectations in many ways. I am impressed by the overwhelming focus on missions and the overall Christian character of the university. I had hoped that my walk with God would be strengthened here and, as usual, God exceeded my expectations.

Smith: Would you send a friend to SBU?

Powers: Definitely! My experience here at SBU has strengthened me in many ways, and I would love to see my friends have this opportunity as well.

Smith: When do you expect to graduate?

Powers: May of 2009

Smith: What do you hope to achieve in the 10 years after SBU?

Powers: Immediately after graduating from SBU, I plan to attend a one-year accelerated BSN program back home. I hope to work at Barnes Jewish Hospital in St. Louis, or elsewhere, as a critical care nurse for a few years to gain some experience. I am also considering continuing my studies in order to become a nurse practitioner. Eventually, I hope to move overseas to serve in cross-cultural missions using nursing as a platform. God has not yet placed a specific country on my heart in which to serve, but I do have a desire to go to rural or unreached areas. And of course at some point, I hope to get married first start a family and serve with them overseas. It is one of my dreams to be able to homeschool my kids one day on the mission field.

Mark Roberts

Smith: What do you do when you are not studying?

Roberts: I spend a lot of time with other people. My room mates and I are pretty crazy so our room seems to attract a lot of attention. If we're all in at the same time it's like an instant party. I like to hang out with the crowd a lot, whether that's watching a movie, camping, or playing a little late night volleyball. On my alone time I really like to read, workout, or involve myself with music.



Smith: How has each part of your life at SBU (academics and other interests) enriched the other?

Roberts: I believe that the goal of studying the Word of God is not that I can have a head full of knowledge but that I can apply it to my life and help others apply it to theirs. In this sense, my studies prepare me to better practice God's truth in the way I live my life here at SBU and the opportunities I am provided to apply the things I learn.

Smith: Were you interested in Biblical Studies in high school?

Roberts: Not until my senior year. I have felt a calling to be in the ministry since I was maybe fourteen. I think my own selfish desires made me put it off and look to where I thought I could find the most success in all the wrong areas. God made sense of all my talents and my abilities and pursued me to where I could not put off full time ministry any longer.

Smith: To what and to whom do you contribute your success as a high-achieving scholar?

Roberts: First and foremost I believe that God equipped me with the ability and desire to do well in school. And, of course, he blessed me with parents who always pushed me to do my best in whatever I find myself doing.

Smith: What is a typical day for you? How many hours a week do you study?

Roberts: A typical day for me always includes class until the early afternoon. What I do from there is pretty random, but in the afternoon I am usually doing something a little more relaxing like reading or watching a movie with my room mates. In the evening I usually spend my time involved with my different activities and doing homework or hanging out. I am a little ashamed to say I might study only five hours a week or so.

Smith: Why did you choose SBU?

Roberts: SBU was a pretty simple choice for me. I knew I wanted to go to a Christian school, so that helped eliminate a lot of choices. The second decision, of course, was what I could afford. Without question, SBU offered me some of the best scholarships around. The deciding factor was the location, and after my first visit I committed.

Smith: Has SBU met your expectations?

Roberts: Definitely. There have been times where I have doubted my decision, but looking back after my first year at SBU I can hardly imagine another school where I would fit in as good. Would you send a friend to SBU? I already have!

Smith: When do you expect to graduate?

Roberts: Four years for sure. I think I could pull off graduating a little earlier, but I'd rather just take it slow and make the most of it.

Smith: What do you hope to achieve in the 10 years after SBU?

Roberts: I want to achieve as much as I possibly can. God hasn't revealed all the directions he wants me to go, but I would definitely like to go to seminary and travel up the ladder of academia to get my doctorate. I also have a heart for world evangelism, and I believe that God will use that desire to lead me to exactly where he wants me and accomplish exactly what he has for me.

Smith: Do you have any additional thoughts to add for our alumni and friends?

Roberts: Thank you alumni and friends for generously supporting our campus! As I played volleyball tonight I noticed that it was the alumni who donated the lights to support our late night habit. We are very grateful.

Kara Stephens

Smith: What do you do when you are not studying?

Stephens: I do a great many things. Primarily I enjoy laughing, being with my friends and meeting new people. I'm involved in various activities and teams on campus, such as: Run 2 Win (a mentoring program), *The Omnibus* (the campus newspaper), and presently I'm a team member of Watch Your Back! (my intramural soccer team) and the Ligers (my indoor soccer team that plays in Springfield). I also love creating unexpected adventures and carrying them to completion. If there is any extra time after all of this I love to read, watch movies, and enjoy the outdoors.



Smith: How has each part of your life at SBU (academics and other interests) enriched the other?

Stephens: Each part of my life influences the other parts so much that it is difficult to tell them apart. Academically and intellectually my studies

have helped me better understand the world around me and how to influence it. I'm a thinker, so I like applying many of the things I learn in class to real life situations. My other interests such as reading, philosophy, soccer, music, movies, and the outdoors have had a major impact on my overall well-being. I enjoy finding

deep and thoughtful themes in the things I read, listen to, watch, and do. So, my intellectual side and my "fun" side quite often are one in the same.

Smith: Were you interested in communications in high school?

Stephens: Quite honestly, no, I didn't really have an interest in communications in high school. Speech class was not a marvelous experience, so I put any thought of such things out of my head. I did greatly enjoy English though.

Smith: To what and to whom do you contribute your success as a high-achieving scholar?

Stephens: Motivation and persistence are the two main contributors to my success in academics. I am not a person who already knows everything. I most definitely have to work for it. I have had amazing and influential teachers in high school and professors here at SBU that have greatly encouraged me and assisted me in my success. My awesome parents have been a great inspiration to me through everything.

Smith: What is a typical day for you? How many hours a week do you study?

Stephens: A typical day consists of attending classes in the morning and early afternoon. Then, if I have meetings or anything I go tend to those as well. Later, if it is nice outside I like to skateboard over to the Forum and study there. I like to keep my afternoons relaxed, and I often snag some shut eye during that time. In the evenings is when I truly get busy. If there is a soccer game or something of that sort I go do that. Then, when I'm done I hit the books pretty hard. This may sound silly, but I'm a night person so it suits me well. Oh, as to how many hours a week I study, I'm unsure, but I do invest a good part of my time reading for classes, which is usually not terrible since I enjoy reading.

Smith: Why did you choose SBU?

Stephens: I chose SBU primarily because of the Christian atmosphere here. Though I knew I could do well at a secular school, I thought I would really enjoy the Christian values that SBU had to offer. Also, everyone, including the professors, seemed so friendly that I felt that I would fit in quite well here.

Smith: Has SBU met your expectations?

Stephens: Yes, SBU has met my expectations. The professors are simply amazing. I have learned so much, not just about the given subject, but more about life and how to view and live it. Also, the missions emphasis on campus is great, I know that my university is doing its best to reach the world for Christ.

Smith: Would you send a friend to SBU?

Stephens: Oh yes, I would. In fact, I have tried sending friends to SBU, and I am presently attempting to persuade one to come.

Smith: When do you expect to graduate?

Stephens: I don't quite know when I'm going to graduate, but I think somewhere around Fall 2008.

Smith: What do you hope to achieve in the 10 years after SBU?

Stephens: I hope to attend graduate school and I would like to get married sometime. I want to learn as much as possible, and I am thinking of maybe even becoming a college instructor or professor.

Smith: Do you have any additional thoughts to add for our alumni and friends?

Stephens: The SBU Honors Program is one of the newer programs that SBU has to offer. My experience in it thus far has been a great one. There are those who are working to help the Honors Program offer varied cultural and educational experiences for those who participate in it. I thank and applaud those individuals,

CONTINUED NEXT PAGE ►



and I would like to specifically thank Mrs. Allison Langford for leading me, as well as the first Honors group.

Vincent Tichenor

Smith: How have you balanced your athletic pursuits in cross country with your studies?

Tichenor: It has been a hard year. I am studying Pre-Medicine, working toward a double major in Biology and Chemistry, and keeping up with the intensity of a year-long season in cross country and track. It has been a gratifying challenge. In fact, the way in which I've held the tension between athletics and academics is hard to recall because it has all been a blur. Cross country faded into indoor track which faded into outdoor track; first semester chemistry and biology faded into second semester chemistry and biology, and before I knew it, the year was over. I guess I just took things one week at a time.



Smith: How has each part of your life at SBU (academics and athletics) enriched the other?

Tichenor: Honestly, it's hard to say. I've had few friends in both cross country/track and my classes, so study partnerships have been rare. Many times I've had to take a test in the morning a day or two early because I was going to be gone to a track meet the day of the test. I've had to go to many 8:00 classes smelling badly because there was not enough time between practice and my first class to take a shower. My studies

have helped me understand the kinesiology of my running, but otherwise, the two have simply made one another more challenging. However, I would not take it back. Sure, I am pretty much exhausted from the whole year, but I had a blast doing it.

Smith: Were you a scholar-athlete in high school?

Tichenor: Yes. I also ran cross country and track in high school.

Smith: To what and to whom do you contribute your success as a high-achieving scholar and high-achieving athlete?

Tichenor: The first credit that I have to give is to God. He gave me the physical ability to do well in academics as well as athletics. He has kept me safe during my years of running. He's blessed me in ways that I don't deserve. I also have to give credit to my parents. They encouraged me to do my best in whatever I did, not necessarily concerned with what I wanted to do, but more concerned that I enjoyed what I did and that it honored God. I also have to give credit to my friends in high school. I competed academically with certain friends, athletically with others, and I think that the friendly competition that we had gave me a taste for hard work.

Smith: What is a typical day for you? How many hours a week do you run? How many do you study?

Tichenor: A typical day, if I had to generalize, would be classes from about 9:00 to around 1:00 or 2:00, running in the afternoon until about 5:00, then different things in the evening. I volunteer at Springhill Baptist Church on Wednesdays, I have Uganda mission meetings on any given day of the week, and then whatever fun stuff I have time for. Honestly though, there really is no typical day. The schedule of my classes is the most controlled thing in my week, other than that, there's no way to know what the next day holds. Running takes up quite a bit of time. During track, we could spend two hours every afternoon practicing, then about three hours all together on the weekends. During cross country it's longer. Practices could sometimes go from 5:00 a.m. right up to my first class at 8:00 a.m. I don't really spend too much time out of class studying. I admit, I have studied more this year than ever, but mainly I get most of my learning digested in the classroom.

Smith: Why did you choose SBU?

Tichenor: There are a few reasons why I chose SBU. It is a Christian campus. I came here for church camp every summer in high school, so I knew the campus inside and out. My church is another reason; they've always had close ties to SBU. Dr. Reeves comes to my church occasionally and speaks. The fact that they have a Pre-Med program was a big factor. Scholarships are always a consideration. All of those things made me consider SBU heavily along with Arkansas and Yale, but Coach Delong was the reason that I finally made my decision.

Smith: Has SBU met your expectations?

Tichenor: Pretty much, in both the good and the bad. I knew that it would be a great place to study and grow as a Christian, and I knew that I would have a blast here (which I have). But I also knew that there would be a downside. It is sometimes hard to find something to do, and people sometimes act in ways that are unbecoming of Christians, but I do that too. Those things are to be expected, though. I was also not surprised when no one respected us as a track or cross country team, but that is about to change.

Smith: Would you send a friend to SBU?

Tichenor: Without hesitation.

Smith: When do you expect to graduate?

Tichenor: I have worked out a plan that lets me graduate halfway through my senior year.

Smith: What do you hope to achieve in the 10 years after SBU?

Tichenor: Occupationally, my hope is to become a physician in Salt Lake City, Utah. I hope to get married, have a family, and all that stuff too. ■

Faculty/Staff News

DR. JOHN WHEELER NAMED 2006 ORIEN B. HENDREX DISTINGUISHED TEACHER

In addition to recognizing the graduates at the May commencement, the 2006 Orien B. Hendrex Distinguished Teacher Award was presented to education professor Dr.



John Wheeler during the ceremony. The Distinguished Teacher Award is chosen by the current and three previous graduating classes and is presented annually to a faculty member for "outstanding teaching ability and personal guidance." Wheeler first

received this award in 1987 for his accomplishments as a faculty member.

SBU FACULTY MEMBER NAMED PARKWAY DISTINGUISHED PROFESSOR

Dr. Rodney Reeves, Professor and Dean of the Courts Redford College of Theology and Ministry, is the recipient of this year's Parkway Distinguished Professor Award. This award is made possible by the Parkway Baptist Church of St. Louis, Missouri.

The Christian College Education Committee at Parkway Baptist Church recently invited SBU to nominate an outstanding faculty member to be considered for this award. The nomination submission from SBU stated, "As a disciple of Christ, Reeves has portrayed a servant's heart and Godly leadership. He is a man who demonstrates his personal convictions in and out

of the classroom. Students, faculty, administration, and staff have been recipients of his caring nature, his academic excellence, and wise leadership. He serves as a Christian role model to all as he gener-

ously invests himself in the lives of his students and colleagues."

Reeves became a faculty member at Southwest Baptist University in August 2000, and he has served for the past three years as dean. He received his bachelor's degree from Southwest Baptist University in 1979, completed his Master of Divinity at Southwestern Baptist Theological Seminary in 1982, and a Doctor of Philosophy from Southwestern Baptist Theological Seminary in 1986. Since that time he has been youth minister, associate pastor, pastor, interim pastor of various churches, senior pastor, adjunct faculty, faculty member, department chair, and dean. Reeves has been active in professional activities, presented papers, held offices in various organizations, spoken at various events, and has had numerous papers/articles, and books published.

Reeves and his wife, Sheri, are active members of First Baptist Church in Bolivar. They have three children.

RETIRING FACULTY AND STAFF MEMBERS HONORED AT MAY COMMENCEMENT

Three retiring SBU faculty members and one staff member were recognized during the commencement ceremony held Saturday, May 20, at 10:00 a.m. on the Merrill Burnidge Memorial Forum on the Bolivar campus.

DR. BILLIE LANG

Born in Jackson, Mississippi, Dr. Billie Lang completed her B.S. in zoology at Mississippi College in 1965. In 1967 and 1970, respectively, she earned her master of science and her Ph.D. in biology from the University of Mississippi in Oxford. Following completion of her doctorate, Lang completed four years of postdoctoral work at Cornell University and the University of Texas Health Science Center.

Prior to coming to SBU in 1990, Lang had a distinguished career in academics with faculty appointments at the University of Manitoba, Winnipeg, Manitoba,



Canada; the University of Kentucky Medical Center, Lexington; Johnson County Community College, Overland Park, Kansas; St. Xavier University, Chicago, Illinois; Montgomery Bell Academy and Belmont University in Nashville. She held the rank of professor of biology, and serves in the university's department of biology where she was active in teaching, sponsoring undergraduate research, and serving as advisor to SBU's medical technology program and pre-health careers committee. She is a former Alpha Chi sponsor and has served as chair or as a member of the academic honors committee for sixteen years.

Lang is an active member of University Heights Baptist Church, Springfield, Missouri, where she is a deacon, an adult Sunday school teacher. She is active in WMU and in teaching Sunday school. Lang, and her late husband, Roy, have a daughter, Leslie Donegan, who is married to Christopher Donegan. Lang is the proud grandmother of Emma, who is five.

LYNN PENTICUFF

Lynn Penticuff, associate professor of music, joined the faculty of Southwest Baptist University in 1975. He earned a bachelor's degree in music education and a master's degree in music from Central Missouri State University in Warrensburg. Penticuff also completed some courses toward a doctoral degree at the University of Missouri-Kansas City.

During his teaching career at SBU, Penticuff taught applied voice preparing students for senior recitals and a variety of classes including music education, music literature, vocal pedagogy and concert choir. Prior to his employment at SBU, he taught on

the secondary level in Carpentersville, Illinois, and at Rockhurst College in Kansas City, Missouri.

He and his wife, Karen, have two children, Paul, an attorney and a member of the SBU class of 1990, and Mark, a biology teacher and a member of the SBU class of 1993. Lynn and Karen have four grandchildren. The Penticuffs attend First Baptist Church in Bolivar.

continues next page

Faculty/Staff News continued

DR. CARL HUSER

A native of Lockwood, Missouri, Dr. Carl Huser received an associate's degree from Southwest Baptist College in 1962 and was awarded the student Life Beautiful Award at his graduation. He earned a bachelor of science degree in education from Missouri State University (formerly Southwest



Missouri State University) in 1964, and a master's degree in science in 1966 from the University of Minnesota. Also, he earned a doctorate degree from the University of Missouri in 1983.

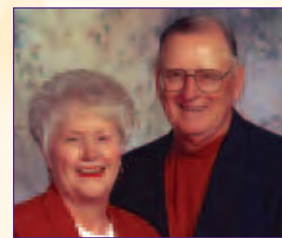
Huser has been a faculty member in the department of biology at SBU since 1966. Holding the rank of senior professor, Huser's past service to the department includes department chair, appointment as the department's Faculty Senate representative, and a variety of college and University-wide committee assignments spanning four decades of service. Huser has participated in judging area science fairs, promoted dual credit classes with area high schools, and fostered interest in the biological sciences on the SBU campus.

In 2002, Huser was a recipient of SBU's Life Service Award. At the chapel service in which he received the LSA, he was quoted as saying, "...we are a product of those we encounter; family (parents, wife, children), former teachers, pastors, friends, ...and above all...the work of the Lord Jesus Christ." Huser is a member of the American Association for the Advancement of Science and the American Institute of Biological Sciences.

Huser is an active member of First Baptist Church of Bolivar. He and his wife, Carol, SBU class of '75, have two children, Cary, SBU class of '92, and Cathryn, SBU class of '91.

ANN BROWN

Ann Brown began working at SBU in 1986 as a part-time employee. Since 1988, she has worked full time in the registrar's office; however, Ann has been a member of the University family since 1969 when



she and her family moved to Bolivar so her husband could join the faculty at SBU. Ann was selected by the Mellers Foundation in 1984 to partici-

pate in an all-expense paid trip to the Holy Land. More recently, in 2000, Ann was the recipient of the SBU Staff Life Beautiful Award.

Prior to working in the registrar's office at SBU, Ann worked for a local dentist. She also was a full-time mother raising her two sons, Kyle, and Scott, who is a 1995 SBU graduate. Ann and Rex have been married since 1962, and they have four grandchildren: Mikail, Mallory, Patrick and Cody. The Browns attend First Baptist Church of Bolivar where Ann has taught the four-year old Sunday school class for 29 years and serves on the NTO committee. Ann's plans are to retire at the end of May.

More than 400 undergraduate and graduate students received their degrees during the ceremony. The commencement address was given by guest speaker Dr. Carolyn G. Bishop, President of the Consortium for Global Education. Bishop has more than twenty years of experience with international public and private schools, government ministries and foreign education institutions. She earned her B.A. in education at Furman University and received her M.Ed. at Clemson University and Ph.D. in Educational Administration and Leadership from Emory University. Bishop became the International Director for the Consortium for Global Education (CGE) in 1997 and was elected president of CGE in 2002.

Before joining CGE, Bishop taught undergraduate and graduate level students in teaching methods at Emory University and supervised 50 student teachers in Atlanta area schools. Also, from 1991-1996, she was an education consultant for Global Partners based in London where she provided educational project assistance in developing countries coordinating student and faculty exchanges in thirty countries.

Bishop is the recipient of numerous awards including the Olympic Service Medal from the Republic of Korea; the Educational Honors Award from Dohuk University in Iraq and was selected senior fellow at the Institute for International Studies at Union University. She is a member of the CGE Board, the International Center for Ethnographic Studies, Global Resource Services and Specialists for International Training and Education. Bishop resides in Marietta, Georgia.

SBU COLLEGE OF SCIENCE AND MATHEMATICS ANNOUNCES ANNUAL FACULTY/STAFF AWARDS

During a recent meeting, the SBU College of Science and Mathematics presented its annual awards to faculty and staff. These awards are given by a vote

of the faculty, and include the Faculty Service Award, the Staff Service Award, and the Faith in Disciple Award.

This year's recipients were Rose Christian (Staff Service Award), Dr. Rosalyn Snellen (Faith in Discipline Award) and Dr. Herb Hamann (Faculty Service Award). These college-level awards were established in 2005.

SBU INSTRUCTOR'S ART QUILTS EXHIBITED AT SPRINGFIELD ART MUSEUM

Dianna Callahan, instructor and director of Southwest Baptist University's Driskill Art Gallery, is one of fifteen fiber artists from Missouri and Kansas who is a member of the Uncommon Threads: Contemporary Art Quilt Group. The art quilts made by the members were featured in an exhibition at the Springfield Art Museum from April 22 through June 4.

According to publicity material from the Springfield Art Museum, Uncommon Threads has previously exhibited at the Hawthorn Galleries, the Creamery Arts Center and in the Driskill Art Gallery at Southwest Baptist University. Many of the group's members are award-winning artists who have exhibited in juried international shows and publications including the Museum of American Quilters' Society, the AQS Quilt Art Calendar, Quilt National 2005, the American Quilters' Society Exhibition and the Husqvarna Viking Exhibition.

These artists find their form of expression in the tactile medium of fiber, texture and color. Unlike traditional quilt makers, they explore innovative techniques in quilt-making and fiber art construction. The "Art Quilt" is not designed for use on a bed like a traditional quilt; it is meant to be hung on the wall like a painting or to be a three dimensional hanging piece. Like a painting or other work of art, the subject of the design may be abstract, representational or figurative. The artists use many different fiber materials and may dye, paint, cut, tear, or fuse the fabric or other fibers as part of their work. They may embellish it with beads, buttons, photos or found objects. Hand-stitching, embroidery or machine-quilting also gives the work a physical dimensional interest that paint cannot.

SBU PROFESSOR PUBLISHED IN ACADEMIC JOURNAL

Josh Compton, Chair of the Department of Communication and Assistant Professor of

Communication at Southwest Baptist University, recently had work published in *Health Communication*, one of the nation's most prominent health communication journals.

Compton's study, "Serious as a Heart Attack: Health-Related Content of Late-Night Comedy Television," surveyed 787 episodes of *The Tonight Show with Jay Leno*, *Late Show with David Letterman*, and *Late Night with Conan O'Brien*. The study revealed seven primary themes surrounding comedians' treatment of Vice President Dick Cheney's heart problems.

"The vice president is a perfect storm when it comes to late night comedy ridicule," Compton said. "He is in a position of power, has well-publicized



health issues, and is easily caricatured. Compton's paper remarks that before invasive media, politicians were able to keep their health conditions private.

"Joshua Meyrowitz wrote an excellent book published in the early 1980s that provides the basis for my own study,"

Compton said. "In *No Sense of Place*, Meyrowitz argues that television allows viewers to peer into private lives—especially private lives of celebrities and politicians. This has radically transformed how we view our government."

"Add an increasingly political focus from late night comedy programming and you have all of the ingredients for rhetoric that—outside of the bounds of a comedy show—would be considered over-the-line," Compton said. "In what other venues could we get away with joking about fatal heart attacks?"

Compton notes that late night comedy has not always received attention or respect from the academic community. For years, people have dismissed it as harmless entertainment. However, research in the early 2000's suggested powerful impacts of late night comedy television on political attitudes and behaviors.

"Like it or not, late night comedy matters," Compton said. "Humor is a powerful force in shaping attitudes and often in ways we do not even notice."

SBU PROFESSOR AND DEAN NAMED TO WHO'S WHO IN AMERICA®

Dr. Richard Brewer, Professor of Psychology, and Dr. Linda Wooderson, Dean of Lewis E. Schollian

College of Education and Social Sciences, have been selected to be included in *Who's Who in America®*. Brewer and Wooderson will be profiled in the 2005-2006 edition available in September.

Published by A.N. Marquis, *Who's Who in America®* is the leading biographical reference publisher of the highest achievers and contributors from across the country and around the world.

A.N. Marquis printed the First Edition of *Who's Who in America®* in 1899 and since then has chronicled the lives of the most accomplished individuals and innovators from every significant field of endeavor including politics, business, medicine, law, education, art, religion and entertainment.

Brewer also delivered the baccalaureate address to the graduating seniors at Lakeland High School in Lowry City, Missouri.

SBU ASSISTANT REGISTRAR RECEIVES SECOND PLACE IN NATIONAL PHOTOGRAPHY COMPETITION

SBU Assistant Registrar, Christopher Nichols, received second place in the monthly competition, "Your Best Shot" sponsored by a leading United States photography magazine, *Popular Photography*.

Popular Photography, with a circulation of over 500,000, contacted Nichols after they had seen one of his photos submitted for critique online. The award-winning photo is of Nichols' niece.

Nichols took second place and was awarded a prize of \$200. His photo is featured in the June 2006 issue of *Popular Photography*.

SBU DEAN INTERVIEWED ABOUT BOOK ON GENUINE FAITH

Dr. Rodney Reeves, Dean and Professor of Biblical Studies at the SBU Courts Redford College of Theology and Ministry, was recently interviewed by The Harvest Show television program about his book, *A Genuine Faith: How to Follow Jesus Today*.

Reeves' publisher, Baker Books, flew him to the television station in Indiana; the show was tape-to-live and broadcast nationally and internationally (to DirectTV, DishNetwork's Angel channel, and many cable networks).

Since the book came out in fall of 2005, Reeves has done over a dozen radio interviews about the book (all of these interviews were set up by the publicist at Baker Books), in a number of major markets: from Los Angeles to Philadelphia, Minneapolis to

Miami.

Reeves' book guides readers who want to learn how to walk as a genuine disciple of Jesus and follow him according to Matthew, Mark, Luke and John.

SBU MARKETING TEAM EXPANDS TO INCLUDE TWO ALUMNI

Two SBU alumni recently joined the Marketing and Communications team. Shawn Summers '94, a

Communications graduate of SBU, is the new Director of Alumni and Church Relations.

Another SBU Communications graduate, Justin Wollard '97, joins the team as Graphic Designer.

Summers returns to SBU after serving as road and concert tour manager

for renowned Christian harpist and music evangelist, Greg Buchanan, for the past nine years. Summers and his wife, Cheryl, SBU Class of 1996, relocated to Bolivar from the St. Louis area with their daughter,

Claire.

Wollard is well-known to the SBU community as the public address announcer for the basketball and football teams as well as for Bolivar High School football team. Before returning to SBU, Wollard worked for seven years as Art

Director and graphic designer for Wannemacher Advertising Company in Springfield.

Summers and Wollard will be working together with Sharina Smith, Senior Director of Marketing and Communications, in the enrollment management department of the University. ■





We sincerely regret that the following donors were inadvertently omitted from the President's Report 2005. We appreciate all of our donors' generous support.

ANNUAL GIFT CLUBS

DISTINGUISHED LEADERSHIP CIRCLE \$5,000 AND ABOVE

Mr. and Mrs. Gary Black
Dr. and Mrs. Robert Cunningham
Mr. and Mrs. Phil Franz
Clifford Gouge Estate
Mr. and Mrs. Jeff Hutchens
Mr. Mack Miller
Dr. and Mrs. Carl R. Roberts
Mr. and Mrs. William N. Stout

PRESIDENT'S COUNCIL \$1,000 - \$4,999

Mr. and Mrs. David Abbott
Estate of Robert Adams
Ms. Kayla Adams
Mr. Kelly Baker
Ms. Karena Blaes
Ms. Kristen Blinzler
Mr. and Mrs. Bobby W. Bryant
Ms. Crystal Coakley
Mr. Josh Collins
Ms. Rachelle Conn
Mr. and Mrs. Tim Copenhaver
Corbin Charitable Trust
Dr. T. Brad Coy
Ms. Myra Doss
Mrs. Clytice Duzan
Dr. Patrick Gibson
Mrs. Myrtle Glass
Ms. Mary Gozik
Mr. Nathan Harris
Mr. Davey Hawthorne
Mr. and Mrs. Rollen Hayden
Mr. Zach Henderson
Mr. and Mrs. Nolan Holman

Ms. Sara Hull
Dr. and Mrs. Carl Huser
Mr. and Mrs. Jack Huser
Mr. and Mrs. Ron Jones
Mr. Jeff Kephart
Mrs. Ruth Killingsworth
Ms. Kathleen Kirk
Mr. and Mrs. William Lane
Ms. Tabitha Lane
Ms. Juli McCampbell
Mr. and Mrs. Guthrie Middleton
Ms. Nancy Myers
Mr. and Mrs. Gerald Nostrand
Ms. Marianne Nothum
Mr. Brett Roberts
Ms. Donna Roberts
Mr. Keith St. Clair
Mr. Aaron Weaver
Mr. Lee White
Mr. and Mrs. David Wilkerson
Mr. and Mrs. Hershel Williams
Mr. and Mrs. William Woodall
Ms. Bethany Worrel
Mr. Jim York

PROVOST'S CLUB \$500 - \$999

Mr. and Mrs. Joseph Elliot
Mr. and Mrs. Larry Jones
Ms. Ivry Karamitros
Dr. Charlie Lane
Mr. and Mrs. Turner Lawson
Ms. Stephanie Lilly
Dr. Richard Lochamy
Ms. Carol Love
Judge and Mrs. Gary Lynch
Ms. Deborah Martin
Mr. and Mrs. McMillin
Ms. Christiana Miller

Mr. and Mrs. Tony Monte
Mr. and Mrs. Gary Moore
Ms. Landee Neville
Ms. Nicole Nordyke
Mr. and Mrs. Michael Norvell
Mr. and Mrs. John Paden
Mr. and Mrs. John Pahlmann
Ms. Stephanie Phelps
Mr. and Mrs. John Plank
Mr. and Mrs. Gerard Porter
Mr. Steven Privette
Mr. and Mrs. Paul Rains
Mr. & Mrs. Jonathon Richardson
Ms. Dana Risler
Mr. and Mrs. Phillip Scalf
Ms. Ashley Schaffer
Mr. and Mrs. Allan Schilter
Ms. Miranda Schreck
Ms. Marilyn Schuetzner
Mrs. Jackie Sheets-Harris
Mr. and Mrs. Rex Shewmaker
Ms. Janna Slinkard
Ms. Alissa Smith
Mr. and Mrs. Ken Smith
Mr. Sean Smith
Mr. and Mrs. Lowell Sneller
Mr. and Mrs. Nate South
Ms. Heather Tanck
Mr. and Mrs. Benjamin York

FOUNDERS' CLUB \$250 - \$499

Ms. Olene Adams
Mr. Kyle Ausmus
Ms. Kacey Baugh
Mr. David Bauman
Mr. Micah Beebe
Dr. and Mrs. Daniel Beer
Mr. and Mrs. John Bentley

Ms. Sarah Bishop
Ms. Pauline Bostron
Mr. and Mrs. George Bouckert
Ms. Sharon Bracken
Ms. Genevieve Bromley
Dr. and Mrs. Autry Brown
Mr. and Mrs. Dan Bryan
Ms. Kathy Butts
Ms. Kallie Bylo
Ms. Kimber Carriker
Mr. and Mrs. David P. Clark
Mr. and Mrs. Kendall Combs
Mr. and Mrs. Jerry Croy
Ms. Regina Douglas
Mr. and Mrs. Rodney Ferguson
Mr. Bryan Fisher
Mr. Chris Garrett
Mr. and Mrs. Ronnie George
Mr. Andrew Gible
Mr. and Mrs. Thomas Grady
Mr. and Mrs. Gerald Gray
Mr. Ethan Hampton
Ms. Frances Hanson
Mrs. Frances Head

Ms. Sarah Jo Herbek
Mr. and Mrs. Larry Hines
Mr. Joel Houchins
Ms. Linda Huggins
Ms. Emily Huser
Mr. and Mrs. Lindell Jones
Ms. Lindsay R. Jones
Mr. Max Jones
Mr. Ben Jury
Mr. and Mrs. James Kelly
Ms. Ashley King
Mr. and Mrs. Quinn Krehbiel
Mr. Matt Layton
Mr. Robert Lee
Mr. and Mrs. Michael Lombardo
Mrs. Rachel Lovelace
Ms. Stephanie Luce
Ms. Erin Lyons
Mr. Andrew Marsh
Mr. Clifton Marstaller
Mr. and Mrs. Tim McGill
Ms. Lindsay McMillin
Ms. Jan Miller
Ms. Renee Miller

Mr. and Mrs. Philip Morgan
Mr. and Mrs. Charles Morris
Ms. Denise Norris
Mr. Dennis Opperman
Mr. Travis Pace
Mr. and Mrs. Rob Page
Mr. Matthew Parrott
Mr. and Mrs. Howard Pyron
Mr. and Mrs. Bryan Quiggle
Mr. and Mrs. David Ralston
Mr. and Mrs. Kenneth Redus
Mr. and Mrs. Marvin Richards
Miss Ashley Richardson
Ms. Sara Robbins
Mr. and Mrs. Ronald Roselius
Ms. Amy Ross
Mr. and Mrs. Phillip N. Russom
Ms. Joan Sampson
Mr. and Mrs. Reed Sanderson
Mrs. Carla Scalf
Mr. and Mrs. D. R. Scalf
Mrs. Richard and Leigh Scalf
Ms. Sandra Schifferdecker
Mr. and Mrs. David Schlote

Mr. and Mrs. Steve Scott
Dr. and Mrs. Jim Sells
Mr. and Mrs. Mark Stephens
Mrs. Eldorene Stewart
Ms. Danielle Talbert
Ms. Hilary Tanck
Mr. and Mrs. Jeff Tanck
Mr. Jeffrey Thomas
Ms. Melissa Tinker
Mrs. Gara Toalson
Rev. and Mrs. Robert Tolliver
Mr. and Mrs. Didier Villard
Mr. and Mrs. Tyler Whipkey
Ms. Brittaney Whittenburg
Ms. Lu Rae Wilkins
Mr. and Mrs. David Williams
Mr. Richard Woods
Mr. Craig Wright
Mr. John Wright
Ms. Stephanie Yearout

ANNUAL CORPORATE/ FOUNDATION GIFT CLUBS

DISTINGUISHED LEADERSHIP CIRCLE \$5,000 AND ABOVE

Sunderland Foundation, Overland Park, KS
Walton Family Foundation, Inc., Bentonville, AR

PRESIDENT'S COUNCIL \$1,000 - \$4,999

Dana Corporation Foundation, Toledo, OH
Lake of the Ozarks Elks Lodge, Lake Ozark, MO
First Baptist Church, Gerald, MO
First Baptist Church, Oak Grove, MO
Greater Kansas City SBU Alumni Chapter, Kansas City, MO
SBU Alumni Association, Bolivar, MO
Smart Insurance Agency, Marionville, MO

PROVOST'S CLUB \$500 - \$999

Booster Club of Strafford, Strafford, MO
Crane Broiler Festival Association, Crane, MO
First Southern Baptist Church, Fritch, TX
Goshen Lions Club, Troy, AL
Meadow Grove Baptist Church, Brandon, MS
Mt. Vernon R-5 School District, Mt. Vernon, MO
Pleasant Hope School District, Pleasant Hope, MO
Porter Seed House, Bolivar, MO
Providence Baptist Church, Bonne Terre, MO
SBU-Women's Club, Bolivar, MO
Wardell Baptist Church, Wardell, MO ■

Faculty Profile

by Sharina Smith



Dean and Professor Promotes A Genuine Faith...Not Another Marketing Scheme

One of the things a successful promoter or marketing specialist must master is the art of not appearing to be promoting or marketing. The most successful promotions are usually the ones that simply show the consumer the benefits of the product. The Great Commission or the call for Christians to “go and tell” is no different, except Dr. Rodney Reeves would say that for today’s Christian there is an even more urgent call to “show and tell.”

If the product is a life following Jesus, what would be the benefits for today’s consumer? Reeves, the current dean and professor of biblical studies at the Courts Redford College of Theology and Ministry at SBU, attempts to answer this question in his latest book, *A Genuine Faith: How to Follow Jesus Today*:

This is what makes us different from devotees of all other religions. We want to live the life of Jesus Christ. We want to be good news for all people. This is why we study the gospels. This is why we memorize his life. This is why we meditate on his words. To us, Jesus is more than a theological idea – he is a necessary sacrifice for our sins. We thank God not only for his perfect death that atones for our sin, but also for his beautiful life that inspires perfection.

In a recent interview on campus, Reeves said, “North America is hungry. We are a nation of spiritual seekers. One wonders if we haven’t always been that way. I used to think the church’s job was to get the message out – ‘If they hear, we’ve done our job.’ The message is out. When the gospel is the punch-line on late-night television, the message is out. The gospel is more than words. People know about Jesus in our culture. They don’t want another sermon. They want to see it. The message is out. Is the message believable?”

“It’s time for the church not just to get the message out, but to live it. That is where my writing *A Genuine Faith* came in. The stories in the gospel will help you live out the gospel. We used to see unbelievers

as ignorant – ‘If they just heard the truth...’ The Gospel says we are all sinners and need God. What if people saw that in us instead of seeing Christians as in the service business to be proud of ourselves? They see pride rather than seeing us as humble servants. If we could be more genuine with one another, the world would see us as more genuine.”



“Here’s the boring truth: God doesn’t need a public relations department; weak people are God’s best work; and the world will never understand grace. This is why we never tire of singing the song for the ages: ‘Grace has brought me safe thus far, and grace will lead me home.’ We all tell the same story: once I was blind, but now I see.”

(from *A Genuine Faith*
by Dr. Rodney Reeves)

selling ourselves – that never worked. It won’t work. People have tried sharing the gospel by beating themselves over the head with it. We are not marketing a product, we are living our faith.” ■

Office of Alumni & Church Relations

Rediscovering SBU



Shawn Summers '94
Director of Alumni
& Church Relations

As I walked across campus this spring, memories of my days as an SBU student flooded my mind: the countless meals at Mellers, basketball games with friends, spades tournaments in the student union and the occasional late-night study sessions in Landen Hall. In June, I began a new aspect of my relationship with SBU as Director of Alumni and Church Relations.

Just as I have had the opportunity to recall my own campus life experiences, I am excited to assist fellow alumni in reconnecting with our alma mater and in helping area churches rediscover SBU. It is a privilege to be able to work for a place that holds so many great personal memories, and I know many of you hold your time at SBU in high regard as well.

When was the last time you have been able to attend Homecoming? You may feel too busy with work and the demands of family life or you may just not know what to expect. If so, I would like to invite you to rediscover Homecoming in 2006. Just as family reunions strengthen the ties in a family, Homecoming events will intensify the ties of the SBU family as stories are told, memories re-lived and old friendships rekindled. I envision Homecoming as a time when all members of the family – students, faculty, staff and alumni of all generations – are able to gather together and reconnect with their own good times at SBU.

Another goal of mine is to serve alumni as we each seek to respond to God’s call on our lives. It was through my own connections with alumni, faculty and staff at SBU that I was able to work in full-time ministry with a Christian music evangelist for the past nine years. SBU offers its students a wealth of resources, and I would like to see the relationship extend past graduation. As a united, connected community with each member having unique experiences in his or her walk of life, we can work together to further the cause of Christ in the world. Energized alumni demonstrating excellence in the world around us will also serve to attract new students to SBU, where they can be trained in a Christ-centered environment and experience the same opportunity we have had to be a part of the SBU family.

I am excited to get to know many of you in a new way as we work together to strengthen the connection between alumni and SBU. I look forward to working as a part of the SBU team, and devoting each day to seeing the lives influenced and changed for the Kingdom!

Shawn Summers '94
Director of Alumni & Church Relations

Keeping in Touch

Let's Keep in Touch! Fill out the form at the end of this section and let us know what's happening in your life.

'30s

Emma Lou (Floyd) Moore, AA '38, now resides with her daughter Ann and her husband, Del, near West Plains, Missouri. Emma is doing very well and loves being back in Missouri. She would love to hear from old classmates from 1936-38 and can be reached at (417) 256-3570.

Norma Bishop '36 AE would like to start a 70-year club of SBU alumni. If you are interested in joining, please contact her at (417) 777-4791.

'40s

Bob Smith, AA '49 and wife Dee currently reside at Prairie Homestead Retirement Center in Wichita, Kansas. Although Bob is retired, he serves as part-time pastor at Midland Community Church, United Church of Christ. The Smith's address is 2101 S. Elizabeth #802, Wichita, KS 67213 and they can be reached by email at rsmith189@cox.net.

'50s

Elvin Jennings, AA '55 and wife Erica (Tackeberry), '56, will celebrate their 50th wedding anniversary on May 19, 2006. Elvin is retired from Terminus Int. and Erica is retired from the U.S. Forest Service. The

couple has three children, Kathy, 48; David, 43; and Keith, 42; and 10 grandchildren and 3 great-grandchildren. Elvin and Erica love living in sunny southern California—while earthquakes do occasionally rumble, they are not as frequent as the tornado activity in Missouri. The couple would like the SBU family to pray for their grandson, Tony Jennings, 23, who will go back to the Middle East (Afghanistan) for his third tour of duty. The Jennings' would also love to hear from their classmates of 1954-55 for Elvin, and 1955-56 for Erica. The couple can be reached at 24600 Mountain Ave #48, Hemet, CA 92544, by phone (951) 927-6893 or by email at ericatj@verizon.net.

Jean (Willis) Kincade, AA '56 and husband Donald will celebrate their 50th wedding anniversary on June 18, 2006. The couple was married following Jean's graduation from SWBC in May of 1956. Jean and Donald have four children and ten grandchildren. Their twin daughters, Marilyn and Marianne, graduated from SWBC in May of 1979 and are now married and living in the Kansas City area. Jean and Donald plan to attend Homecoming 2006 to celebrate with the 50-year class. The couple resides at 220 SW Seagull Ct, Lee's Summit, MO 64082.

Jody Hodson Sturgess, '59, retired after 37 years with Environmental Protection Agency and is now a volunteer with the Independence Fire Department. Judy enjoys several hobbies including quilt making and gardening. She resides at 14405 E. 37 Street, Independence, MO 64055 and can be reached by email at judithsturgess@comcast.net. Judy would love to hear from old friends and alumni.

'60s

Barbara (Poteet) Johnson, AA '65, and husband Carl are retired and have two children Athena Ellis, 39 and Alicia Richardson, 28. The couple resides at 1312 Meadow Road, West Sacramento, CA 95691 and can be reached by email at bjpotectjohnson@aol.com.

Verlena (Poe) Wilson, '64, received a life-saving kidney transplant from her son **Derrick Dillon '94** on April 11, 2006. The surgery was done at Barnes Jewish Hospital in St. Louis. Both Verlena and Derrick are at home in Rolla, Mo. recovering nicely from the surgeries. Verlena can be reached at 1867 Longview Lane, Rolla, MO 65401.

'70s

Jacque (Jeter) Umfleet, BS '70, would love to hear from the Class of 1970. Jacque has two children Jill Davis, 32 and Lindsay Scott, 29. She worked at the school district of Marshfield R-1 from 1970-96. Jacque resides at 701 E. Bedford, Marshfield, MO 65706 and can be reached by email at jumfleet@mmm-co.com.

Sandra Fortner, BA '76, is currently teaching elementary music grades K-5 at Cahokia School District and this year marks her 28th year of teaching. She has two daughters who are both in college and currently resides at 1901 Marseilles Blvd., Cahokia, IL 62206. Sandra can be reached by email at fortnersk@norcom2000.com.

Stan Greer, BS '76, and wife Linda have three children and live in Clearwater, Kansas. Every Wednesday night Stan plays lead electric guitar for the youth at Olivet Baptist Church in Wichita, Kansas. On Sunday's Stan plays acoustic and electric guitars for the Olivet praise band, Lion Food. During the week, Stan teaches 6th grade math and science at Maize Middle School. The Greer's reside at 10634 S. 97th W., Clearwater, KS 67026 and can be reached at sgreer@sktc.net.

Beth (Roberts) Vandenberg, AA '79, is a nursing supervisor and a new grandmother of Maddison Nicole. Beth's husband Dean will retire this year and will enjoy being home. Beth's son Nate Prater who is now 25 married Julie Sailor and her daughter Christy Prater who is 20 is attending college where she is

currently a junior and working on a degree in elementary education. The Vandenberg's reside at 8717 N. Wheaton Ct., Kansas City, MO 64153 and Beth can be reached by email at beth2vandy@yahoo.com.

Dennis Dillin, BA '77, has published his first work of fiction titled *Cap Games: a novel*. He and his wife and family live in Southeast Texas. Visit www.dendillin.com or ddillin@cmaccess.com

'80s

Greg Poston, BS '80, and his wife **Marilyn (Schnorbus), BS '78**, currently reside in Ocoee, Florida. Greg is employed at Roadway Express and Marilyn works at First Baptist Church Windermere. The couple has three children: Brian, 21; Cory, 19; and Stephanie, 17. The Poston's address is 378 Highbrooke Blvd., Ocoee, FL 34761 and they can be reached by email at gposton@cfl.rr.com.

Kelli (Stratton) Powell, BS '82, has two children David 21 and Steven 19. Kelli is an academic counselor and can be reached by email at kspowell@alltel.net.

Brian Coday, BS '88, and wife **Jill (Yantis), '89**, have two children: Tyler, 13 and Regan, 10. Brian has accepted the position of Regional Coordinator with the National Network of Youth Ministries. He is working with churches of all denominations in the seven states that make up the Mid-Atlantic region to develop large-scale, long-term strategies to reach and minister to teenagers in the area. Jill is now home-schooling Tyler while Regan is a 4th grader in the public school system. The Coday's will continue to live and serve in Newark, Delaware where they have lived for the past five years. Brian can be reached by email at bcoday@nynym.org and Jill can be reached at codaylady@comcast.net.

'90s

Allen Mansell, BS '90, has relocated to the Kansas City area and is employed at General Services Administration. Allen can be reached by email at allen2you@aol.com.

Diane (Feldkamp) Harlow, BS '91, is currently a senior project manager. Diane and her husband Terry have four children, Taylor, 12; Tanner, 7; and Tessa and Trenton who are both 2.

Alicia (Williams) Masson '92 is a Captain in the U.S. Army and her husband **Scott, MS '92** is a Major in the U.S. Army. The couple has two children Hannah and Patrick. After a successful and blessed deploy-

ment to Iraq, the couple is happy to be on their way to Baylor for a two-year break and graduate school for Alicia. The Masson's say 'Hello' to everyone that they have not been in touch with, especially their Colorado friends. Alicia and Scott also want to think everyone for all of the prayer and support they have been given. Alicia's email address is alimasson@comcast.net.

Shona (Bratton) Huffman, BS '92, and husband Brian have two children: Chloe, 4 and Lilly, 21 months. Brian is a managing consultant for Credera and Shona is enjoying being a stay-at-home mom after teaching high school government and history for 12 years. Besides being a stay-at-home mom, Shona is also a wedding consultant for Prestonwood Baptist Church where she is putting her OCD to good use. Shona would love to get together with friends in the Dallas-Forth Worth area. The Huffman's reside at 10324 Fire Ridge, Frisco, TX 75034 and Shona's email is shonahuffman@hotmail.com.

Eric Washington, BS '93, was recently inducted into the Sports Hall of Fame at East Mississippi Community College in Scooba, Miss. The induction was based on his background in football at Mississippi Community College and for his awards at Southwest Baptist University, which included receiving the Student Choice Award. Eric is currently employed for the Federal Bureau of Prisons and his wife **Elizabeth (Milbrandt), BS '03**, works for Ozarks Technical Community College. The couple has one child, Darian Izaya, who is 7 months old. The Washington's reside at 870 W. Crestwood, Nixa, MO 65714 and Eric's email is BigEWash45@aol.com.

Matt Clingan, BA '96, and wife **Jill, BS '96**, recently moved to the Wichita, Kan. area where Matt is a computer programmer and Jill is a freelance writer/editor. The couple has one daughter Amélie who is two years old. The Clingan's address is 211 Columbia, Augusta, KS 67010 and Jill's email is jillclingan@gmail.com.

Candace Warner, BS '98, is currently an overseas placement coordinator and resides at 2448 E. Riviera Dr., Tempe, AZ 85282. Candace can be contacted by email at kendica@yahoo.com.

Jamie Beckner, BS '98, just finished her MBA in May of 2006. Jamie has been employed with Bank of America for nearly two years and was recently promoted to AVP, Client Manager where she manages approximately 150 business clients in a three state region. Jamie resides in Rogers, Ark. and can be reached by email at jamie.beckner@bankofamerica.com.

Frederick Ricker, BS '98, is a tax director for Suddenlink Communications. His wife Christy (Griggs) Ricker is a hospice Care Consultant for the Visiting Nurse Association of Greater St. Louis. They have one child, Quinn Scott who is three years old. The three live at 3582 Summerlyn St. Louis, Missouri 63129. They can also be reached at Christygriggs@hotmail.com

Laura (Franklin) Montgomery, BS '99, and husband Jeremy have a beautiful daughter Mia who is now 4 years old. After graduating from SBU with a degree in

Biology and Chemistry, Laura graduated from Southwest Missouri State with a master's degree in Chemistry and went on to study optometry at the University of Missouri St. Louis School of Optometry. She graduated on May 13 with her optometry degree. Laura, Jeremy and Mia currently reside in Fair Grove, Mo.

2000s

Steven Worstell, BA '05, is currently employed by FaithWorks and can be reached by email at atsrwworstell@yahoo.com.

Anna Maurice, BS '02, is currently employed at New Prime Inc. which is a trucking company in Springfield, Mo. Anna is trying to live life to the fullest while doing God's works. She can be reached by email at maurice_65613@yahoo.com.

Karla Jinene (Frey) Lindemann, MS '06, currently resides in St. James with her husband Gregory and their 13-year-old son, Zachary. She is the daughter of the late Carl C. and Virginia D. Frey of St. James. Karla teaches at the St. James middle school.

Jennifer (Crain) Westworth, BS '00, is currently employed by Georgia Reproductive Specialists. Jennifer's new address is 225 Marsh Trail Cir. NE, Atlanta GA 30328 and she can also be reached by email at jenheaven777@hotmail.com.

Lindsay Johnson, MS '04 and husband Bryan currently reside at 11021 Schrenk Ct., Rolla, MO 65401.

Penny Fahrni, BS '02, is currently teaching 3rd grade in Versailles, Missouri. Penny has recently moved to 58688 Hwy A, Russellville, MO 65074 and can be reached by email at pennyjo80@hotmail.com.

Liz Policht, '04, resides at 3201 Oakmoore Drive, Popular Bluff, MO 63901 and can be reached by email at epolicht@hotmail.com.

Marriages

Larry Scantlan, BS '78, married Janet (Griffin) on November 12, 2005. Larry accepted the position as Director of Information Technology with ERA, Tom Grizzard in Leesburg, Florida on January 16, 2006. In February Larry and Janet moved from Orlando to Salt Springs, Florida. The couple reside at 24860 NE 188th Lane, Salt Springs, FL 32134 and can be reached by email at larry@scancotech.com.

Stefanie (Fredricks), BS '92, married David Canfield on December 31, 2004. Stefanie is employed with WBHQ Columbia, LLC. She has formed her own media company and has recently purchased two net-

continues next page

work-affiliated television stations in the southeast United States. Stefanie and David reside at 609 Bridgecreek Drive, Columbia, SC 29229 and can be reached by email at sein@midlandswb4.com. Stefanie would love to hear from her friends from SBU!



Dani Sue (Hodgins), BS '95, married David Peterson on April 9, 2005. David works as a design engineer for Wilson Trailer and Dani Sue is a full-time student and will complete her secondary (7-12) education/science endorsement program in the spring of 2007. The couple currently reside at 4230 Hickory Lane Apt. 124, Sioux City, IA 51106 and can be reached by email at dave@dlpindustries.com.



Briana (Dalby) Mueller, BS '97, married Garrick Mueller on March 25th, 2006. Briana manages a Lifeway Christian Store, and Garrick is a financial analyst with Medicine Shoppe International. The couple can be reached at briana.dalby@sbcglobal.net.

Carrie (Knapp), AA '01, married Ben Kendall on December 19, 2004. Carrie is employed at Sodexo Services and Ben is a professor at Huntington University. The couple resides at 1142 Elias Murray Drive, Huntington, IN 46750 and can be reached by email at carsy1219@yahoo.com.

Christy (Lemmon), BS '01, married Brandon Vaughn on September 17, 2005 in Dexter, Missouri. Christy is the children's minister at First Baptist Church in Dexter, Mo. and Brandon is a logistics coordinator at Noranda Aluminum in New Madrid, Mo. Christy and Brandon reside at 11335 Satmore Lane, Dexter, MO 63841 and Christy can be reached by email at cvaughn@fbc Dexter.org.

Andy VanBebber, MS '04, and **Janene (Johnson), BA '95**, was married on June 4, 2005 in Auburn, Ill. Andy and Janene were close friends in high school, but never dated until 2003. Andy earned his BA at Hannibal-LaGrange College and later his masters at SBU. He is a social studies teacher at Clopton High School in Eolia, Mo. and also coaches junior high track and 5th and 6th grade girls basketball. Janene works as a Habilitation Program Coordinator (QMRP) at the Jacksonville Developmental Center in Jacksonville, Ill. The couple attends church at First Baptist in Pleasant Hill, Ill. where Andy is the part-time youth minister and Janene is actively involved in the children's ministry. Andy and Janene can be reached at jjjoy73@yahoo.com.

Sarah (Hulme), BS '04, and Justin Mann were married on December 20, 2005. Sarah is currently a middle school math teacher but plans to move to Phoenix to join Justin at the end of the school year in May. Sarah's new address will be 4201 W Union Hills Dr. Apt. #1093, Phoenix, AZ 85308. Sarah can also be contacted by email at sbubearcats@yahoo.com.

Lynnette (Murphy), BS '04, married Joshua Busick on August 10, 2005 in Cocoa Beach, Florida. The couple currently reside in Springfield, Mo. where Lynnette works for St. John's and Joshua is completing his BA at Missouri State University. Lynnette's email address is Lynnerdm@hotmail.com.



DeAnna (Bumgarner), BS '04, married Victor Sheets on April 8, 2006. The couple are living and teaching in the Branson school district. DeAnna's email address is deannasheets3@hotmail.com.

Amanda Swyers, BS '05, married Allen Swyers on October 1, 2005. The couple is currently living in Salem, MO where Amanda is teaching at Iron Co. C-4 School District.

Future Bearcats

Charlene (Jameson) Petsch, BS '87, and husband Richard announce the birth of their daughter, Julia Faith, on June 28, 2005. Julie joins her five siblings: Eli 15, Seth 13, Joe 11, Grace 9 and Lillie 8.

Missy Goodsell-Baugh, BS '93, announces the birth of Matthew "Porter" Baugh on December 26, 2004. Matthew was born 2 months early but after one year is doing excellent. He joins big brothers Parker, 6 and Patton, 10. Missy owns her own daycare and speech, occupational and physical therapy business. The Baugh's have a new address; 432 S. Pinkley Rd., Springdale, AR 72762 and a new email address missy4kidz@cox.net.



Kristen Feola, BS '94, announces the birth of a new baby girl, Jocelyn Kate Feola. She was born September 14, 2005, and joins big sister

Isabell, 2. Kristen is a stay-at-home mom, and proud father, Justin, working with US Public Health Service. The happy family of four live at 3303 S. Kimbrough Ave. Springfield, MO 65807. To contact email jkeola@sbcglobal.net.

Jack Vines, Jr., '94, and with Nicole announce the birth of their daughter Marin Abigail on June 6, 2005. Abigail joins sister Malayna Grace who is 4 years old. The couple resides at 328 Central Place, Kirkwood, MO 63122 and can be reached by email at Jack-Jr@tvengineering.com.

Faith (Kornis) Bilyeu, BS '95, and husband Neil, BA '94, announce the birth of their daughter, Ava Marigold on December 11, 2005. Ava joins three siblings, Becca 10, Evan 8, and Spencer 4. Faith is employed by Arbonne International and Neil is the youth pastor at Faith Evangelical Free Church. The

Bilyeu's reside at 417 N. Third Street, Emmaus, PA 18049 and can be reached by email at writefaith@gmail.com.

Becky (Simpson) Shockley, BS '90, MS '96, and husband Gary announce the birth of William "Boone" on February 24, 2006. William was born on his brother Garrett's 2nd birthday. Becky is employed at Bolivar High School where she is a business teacher. The couple resides at 3496 Hwy D., Polk, MO 65727 and can be reached by email at gbshockley@alltel.net.

Ryan Palmer, BA '96, and wife Paula announce the birth of their son Hayes Worden Palmer born on March 7, 2006. Hayes joins siblings Addison who is two years old. Ryan is the pastor of First Baptist Church in Neosho, Mo. and can be reached by email at ryan@fbcneosho.com.

David Compton, BS '94, MS '97, and wife Becky announce the birth of daughter Jeana Marie on July 22, 2005. Jeana was 9 pounds and 4 ounces and 22 inches long. David is an athletic trainer at Freeman Sports Medicine and Becky works at DFS 60th in Joplin. The Compton resides at 2711 South St. Louis Avenue, Joplin, MO and David's email address is dbcomton@yahoo.com.

Jeff Freeland, BM '98, and wife Terri (Benedict), BS '98, would like to announce the birth of their daughter Lauren Nicole born on February 8, 2006. Jeff received his MS in Educational Administration in 2003 and Terri will graduate in May with her MS in Lead Teaching. Jeff is an elementary music teacher and Terri teaches 3rd grade. The couple reside at 406 East Marshall Street, El Dorado Springs, MO 64744 and can be reached by email at jfreeland@mail.eldo.k12.mo.us.

Samantha (Hamilton) Higley, BS '99, and husband James announce the birth of their daughter Kirsten Grace on January 10, 2006. Samantha works part time for Love Basket adoption agency. Samantha and her family reside at 2080 N. Preakness Dr., Nixa, MO 65714 and can be reached by email at samantha@higley.net.

David Hewitt, BA '00, and wife Helene, BA and BS '98, announce the birth of their son Benjamin Michael on February 19, 2006. Benjamin was born at 11:13 am and was 8 pounds and 11 ounces. He joins his two sisters Rose 4 and Brook 2. The Hewitt's reside at 7231 Wellwood Dr., Indianapolis, IN 46217 and can be reached by email at rincrast@yahoo.com.



Jeremy Davis, BS '01 and wife Julie (Smith), BA '99, would like to announce the birth of Levi Ray Davis born on August 24, 2005.

Levi joins two very loving big brothers, Hunter James 3 and Bo Lyle 2. Jeremy and Julie would love to hear from former classmates. The couple resides at 605 N. Oakland Ave., Bolivar, MO 65613 and can be reached by email at jdavis2@mircore.net.

Valerie (Hankes) Haas, BS '02, and husband Mark announce the birth of their son, Adam James born October 26, 2005. Mark works as a civil engineer for a government contracted agency and Valerie is the athletic trainer at Weselin High School. The couple resides in Trenton, Illinois.

April James, BS '02 and husband **Thomas James, '01**, announced the birth of their daughter Emma Jean James born August 29, 2004. April is currently a Parent Educator at Sparta Schools. Thomas is working as management at Missouri Furniture, Ozark. The happy family currently lives in Sparta Missouri.

In Memory



Grace M. Elsey, '29, passed away on May 6, 2006 in her sleep after a recent illness. She was born on December 11, 1907, in Oronogo, Mo. to John Henry and Mary Elizabeth (Dalton) Medlin. She was united in marriage on August 16, 1931 to Ellis Neece Elsey. Mrs. Elsey received a diploma in Piano from Southwest Baptist College in 1929, a Bachelor of Science in Education from Southwest Missouri State College in 1931 and a Master of Arts from Mississippi College in 1953. Following her educa-

tion, she worked as a secretary of First Baptist Church, Springfield, Mo.; in the Personnel Department at Standard Oil Company, Baton Rouge, La.; Dean of Women at Mississippi College, Clinton, Miss.; Dean of Students at Howard Payne College, Brownwood, Texas. Mrs. Elsey was one of the first deans of women in the United States. In 1963 she was the recipient of the Life Service Award Citation from Southwest Baptist College. After retirement to New Mexico and her husband's death, she returned to Springfield in 1975 where she was a member of University Heights Baptist Church and local chapter ER of P.E.O., an organization she belonged to for a number of years.

Mayor Edna Wasson, '32, passed away May 22, 2006 at age 94. Wasson graduate from Nixa High school in 1930 and went on to earn an Associate of Arts degree from Southwest Baptist University, and later attended Missouri State University. She served for 39 years as postmaster at Nixa and was inducted into the Nixa Academic Hall of Fame in 1995. She also received the Nixa R-II Schools Outstanding Alumni Award in 1986. In 1976, Wasson was elected Nixa Mayor and served a two-year term. She is survived by various family members, including son Jay Wasson, who also served as Nixa mayor for five years and currently represents Nixa in the Missouri House of Representatives.

Naomi Norsworthy, '45, passed away on December 23, 2005. Mrs. Norsworthy was born on November 15, 1925 in Bolivar, Mo. to Martin Luther Harvey and Ruth Aldredge. She married Reverend Robert

"Bob" Norsworthy on August 4, 1950 in Capital Hill Baptist Church in Oklahoma City. Mrs. Norsworthy was a housewife. Survivors include her husband, Rev. Robert "Bob" Norsworthy of Wichita Falls; one daughter, Margaret Anne Marshall and husband Bruce of Dallas; one brother, Paul Harvey and wife Ruth of Ozark, Mo.; and four nieces and two nephews.

Mary Baur Ogle, BA '69, passed away on March 21, 2006. She was a retired school teacher. Survivors of Mary include her four daughters: Bonnie (Laramore), Lucille (Heater), Joy (Cronk), Linda (Ragsdale, BA '67) and daughter-in-law Betty.

Rev. Phillip A. Schenewerk, '93, died may 31, 2006 in his home. He pastored the Asbury Baptist Church (1991-1993) and the first Baptist Church of Mount Leonard, Mo (1993-1994) graduated from Southwest Baptist University (1993) and Midwestern Baptist Theological Seminary (1996). Phil was the chaplain at the Lewis County Jail in Chehalis, WA. Phil was 46. He leaves his two daughters, Rachel 21, and Rebecca 18, and his wife Dawn. They had been married 23 years.

Marietta Mellers, passed away May 25, 2006. The SBU cafeteria – the Marietta Mellers Dining Commons – is named in Mrs. Mellers' honor. The Jim Mellers Center, which houses The Courts Redford College of Theology and Ministry, is named in her husband's honor. Please keep Jim Mellers and all the Mellers friends and families in your thoughts and prayers during this difficult time. ■

Let's Keep in Touch!

Alumni News: _____

Name: _____ Class of: _____ Degree: _____
(please include maiden name if applicable) (AA, BA, BS, MBA, MPT, MS)

Address: _____

Email: _____ Telephone: _____

of Children: _____ Employment: _____

Spouse: _____ Class of: _____ Degree: _____
(please include maiden name if applicable) (AA, BA, BS, MBA, MPT, MS)

Please do not publish my address Please do not publish my email address

Return To: Southwest Baptist University • Office of Alumni Relations • 1600 University Avenue • Bolivar, MO 65613

In honor of Hazel B. "Mom" Craig by Cindy Rice, '73

Anonymous Alumnus Creates Professional Development Fund



"Mom" and "Pop" Craig: A Brief History

Hazel and Clyde Craig hosted more SWBC/SBU students in their home than anyone can imagine. Their caring attitude for individual students created a welcome "home-away-from-home." The friendships formed during their college years remained even after those students moved away from Bolivar.

Clyde, or as most of us call him, "Pop" Craig, first came to Bolivar, Missouri, to move his retired mother and father into a house located at 645 North Oakland. Meanwhile, Hazel or "Mom" Craig remained in Lubbock, Texas. During the next five years, the Craigs moved to Springfield, Missouri, then to Mountain Home, Arkansas, and finally to Bolivar to help care for his parents. Mom and Pop moved into a house on Broadway on July 15, 1965. He operated a business out of his home, Office Machines, which consisted of selling and repairing typewriters and other office machines. Mom Craig typed student term papers and dissertations for SWBC faculty.

Hazel sponsored YWA (Young Women's Association) for many years, encouraging missions around the world. The first Sunday in church a student named Lee Miller turned to ask the Craigs, "Can we come to your house to bake a cake for a friend?" That began what he refers to as the beginning of the entire "Mom and Pop stuff!"

In 1965 Drs. Hugh and Twila Smith stopped by the Craigs' home and hired Mom "on the spot" to work as secretary in the education department. According to Twila Smith, "Mom had the ability to file away in her mind thousands of names and hometowns, remembering where students did their student teaching, who they married, and where they received their first teaching position. She was a top-notch secretary. She could type on an electric typewriter (not a computer) a perfect letter in record time. She met people with a smile, called them by name, and

indicated her concern and love in many ways. If she knew a student had an urgent need, she'd try to figure out how to meet that need in a face-saving manner."

In a recent interview with Pop, he fondly recalls, "After the kids would leave, we would sit and talk about each one individually to decide if we could do anything for them at all. Mom continued to write letters to all who remained in touch with them until she could write no more."

When the typewriter company asked Pop Craig, as their agent, to increase his sales of their product "faster than he could grow corn", that position ended. Pop then worked as the campus mailman at Southwest. When they moved from their Broadway home, they rented Georgia Pennell's house on Forest Street. Pop continued to garden and to care for his parents. When Pop's father passed away, Clyde looked after his mother during the day and Hazel took over at night.

When Pop's mother needed 24-hour care, they decided to move in with her rather than place her in a nursing home. She developed dementia and passed away after Mom Craig retired from Southwest in 1985. Mom passed away on June 23, 2002, following a major stroke.

Pop told us that he would enjoy hearing from anyone who would like to call or write. His address and phone are: 645 N. Oakland, Bolivar, MO 65613 (417) 326-5476.

Hazel Craig Professional Development Fund

More than one year ago an education alumnus created an endowed fund in memory of Mom Craig. The purpose of the fund is to assist all faculty in the department of education to attend professional development seminars. The donor stated, "Mom Craig was there for so many of us at a crucial time in our lives. She had a sympathetic ear, was a positive role model and offered sound counsel."

For several years the donor said he has thought about the impact various faculty and administrative people had on his life while at Southwest. In retrospect, he realized the sacrifice these people had made in order to minister to and encourage students during those years. Knowing how difficult it is for universities to have money available for conferences, workshops and additional training, he decided to create this fund.

The estate planning office at SBU invites you to join this donor in honoring the memory of Mom Craig by your financial support. Please consider a one-time gift or pledge over one to three years to the Hazel Craig Professional Development Fund. For more information please contact Cindy Rice, Director of Private Scholarship Development/Estate Planning Associate, (417) 328-1838, crice@SBUUniv.edu or Steve Whisler, Director of Estate Planning, (417) 328-1528, swhisler@SBUUniv.edu, Southwest Baptist University, 1600 University Avenue, Bolivar, MO 65613. ■

REDISCOVER THE TREASURE

Homecoming Schedule

Friday, October 6

8:00 a.m. - 7:00 p.m.
REGISTRATION CENTER OPEN
Goodson Student Union

9:00 a.m. - 4:00 p.m.
STUDENT ART EXHIBITION
Jester Center, Driskill Art Gallery

10:00 a.m.
HONORS CHAPEL
Life Service Award Presentations;
Edwin Lightfoot Distinguished Alumni Award
Presentation; Homecoming Court Presentation
Mabee Chapel

11:00 a.m.
HONORS RECEPTION
Mabee Chapel Lobby

11:30 a.m.
50-YEAR CLUB LUNCHEON
McClelland Dining Facility

1:00 - 3:00 p.m.
CLASS OF 1956 REUNION
McClelland Dining Facility
Stakeholder's Room

2:00 p.m.
HOMECOMING GOLF TOURNAMENT
Bolivar Golf & Country Club

SBU ALUMNI SOFTBALL HOME RUN DERBY
SBU Softball Field

SBU ALUMNI BASEBALL GAME
Dodson Field

4:30 p.m.
BED RACES
Burnidge Memorial Forum

5:30 - 6:30 p.m.
STUDENT/ALUMNI HOMECOMING DINNER
Mellers Dining Commons

5:30 p.m.
LIFE SERVICE AWARD DINNER
(Current & Former Recipients)
McClelland Dining Facility

7:00 - 9:00 p.m.
ALL-ALUMNI REUNION EVENT
Alumni, Faculty, Staff & Students Invited*
Class Photos of '30's, '40's, '56, '66, '76, '81, '96
Mellers Dining Commons

9:00 p.m.
MUSIC ALUMNI RECEPTION
Casebolt Music Center Lobby

9:00 p.m.
NIGHT PARADE
Plaster Athletic Center

9:30 p.m.
PEP RALLY & BONFIRE

Saturday, October 7
8:00 a.m. - 2:00 p.m.
REGISTRATION CENTER OPEN
Goodson Student Union

8:30 a.m.
ALL-ALUMNI BREAKFAST
Mellers Dining Commons

8:30 a.m.
LETTERMEN'S BREAKFAST
Meyer Wellness & Sports Center 6th Man Club Room

9:00 a.m. - 4:00 p.m.
STUDENT ART EXHIBITION
Jester Center, Driskill Art Gallery

9:30 a.m.
DECADE PARADE WATCHING REUNIONS
Parade Route

10:00 a.m.
HOMECOMING PARADE

10:30 a.m.
REDFORD TAILGATE PARTY
Along Parade Route between Leslie and Beasley Dorms

11:00 a.m.
ACCOUNTING ALUMNI REUNION
Lower Level, (Room 119), Taylor Hall

11:00 a.m. - 1:00 p.m.
ALL-ALUMNI TAILGATE LUNCHEON

1:00 p.m. - 1:30 p.m.
REDISCOVER ALUMNI/FACULTY RECEPTION
Goodson Student Union

2:00 p.m.
BEARCAT FOOTBALL GAME VS FT. HAYS ST.
AND QUEEN CORONATION
Plaster Stadium

5:30 p.m.
MEN'S ALUMNI BASKETBALL GAME
WOMEN'S ALUMNI BASKETBALL GAME
Meyer Wellness & Sports Center

Events and times are subject to change, based on interest
*Child care (10 & under) provided
Contact the Alumni Office for tickets or more information



October 6 & 7
REDISCOVER
THE
TREASURE
SBU Homecoming 2006

To register online, visit
www.sbuniv.edu/alumni